



# Arkansas Department of Correction

## 2003 and 2004 Recidivism Study

George Brewer, Research and Planning Administrator  
Brenda K. Wilson, Management Project Analyst

2007

### Highlights/Summary

1. Overall Recidivism rate has decreased from 51.8% in 2000 to 44.4% in 2004, a 7.4% variance (Table 1, pg. 2).
2. At a three-year post release, 2004 recidivism rates increased from (11.2%) the first 6 months to (44.4%) in three years, a 33.2% overall increase (Table 1, pg. 2).
3. Recidivism rates, over three years, for paroled inmates (45%) were significantly higher than that of discharged inmates (21.9%), in 2004 (Table 2, pg. 3).
4. For 2004 paroles and discharges, return rates increased significantly throughout the three-year post return (Table 2, pg. 3).
5. Parole Violators with New Sentence, within a three-year post release, accounted for 91% of the recidivists. (Table 3, pg. 4).
6. 2004 recidivism rates, for male offenders, show a three-year post return rate of 46.2% as compared to a return rate of 25.2% for females (Table 4, pg. 7).
7. An overall three-year post release for CY 2004 demonstrates that 46.5% of blacks and 43% of whites return to prison. The overall variance did not significantly differentiate. Recidivism rates for both races indicate very small changes during each year studied maintaining good reliability and validity across time (Table 5, pg. 9).
8. For 2004 releases and within a three-year post release and a return to prison, both males and females within the 25-34 age range demonstrated the highest total return rates (Table 6, Pg. 10 & 11).

Administrative Services Division, Research and Planning, Arkansas Department of Correction  
P.O. Box 8707, Pine Bluff, AR. 71602, Telephone (870) 267-6335

**Larry B. Norris, Director**

**Sheila Sharp, Assistant Director**

*Arkansas' Recidivism Study (Addendum)*

The **2003** and **2004** recidivism research is an addendum to the original 1997-1999 study produced in 2003 and the 2000 addendum produced in 2004 and the 2001 addendum produced in 2005 and the 2002 addendum produced in 2006. This addendum was prepared by the Arkansas Department of Correction's Research and Planning Division. The addendum reviews the return rates of inmates released from custody in **CY2003** and **CY2004**, as compared to prior years. The data for this research was obtained from the ADC electronic Offender Management Information System (eOMIS). If an individual was released **January 1, 2003** through **December 31, 2003**, and **January 1, 2004** through **December 31, 2004**, respectively, the data provided reflects returns for a full three-year post release. All charts and tables reflect a three-year post release review and utilized strictly for clarity and ease to the reader.

The study is categorized into return rates of six (6) months, one (1) year, and three (3) years, respectively. As with the 2002 addendum regarding a three-year post release of inmates produced in 2006, the ADC Research and Planning Section will continue to study, track and update trends in release/return rates annually.

*Overall Recidivism Rates*

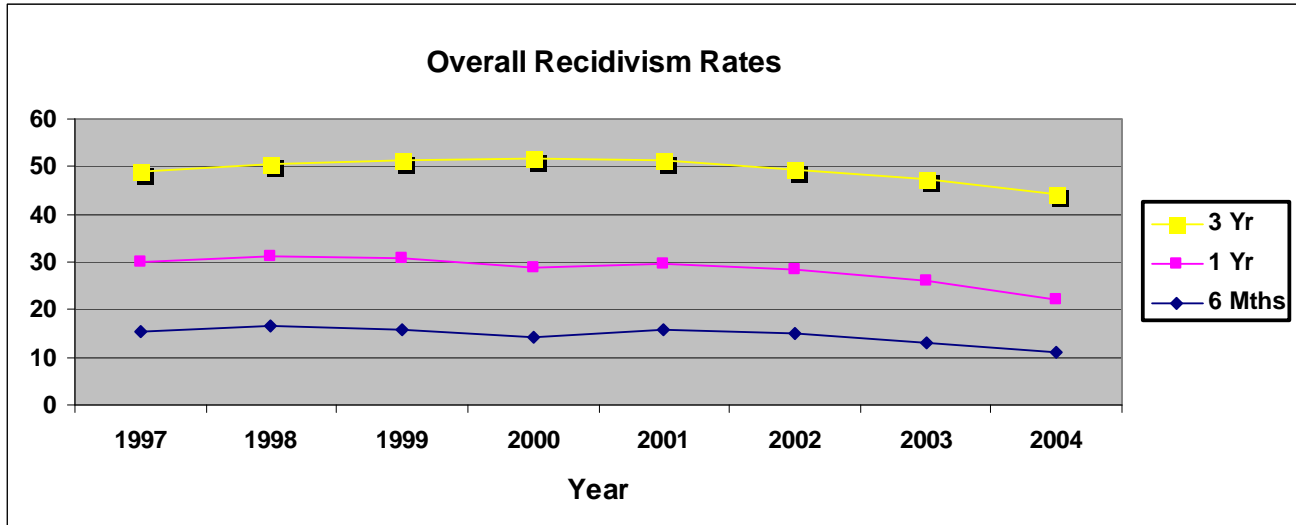
As demonstrated, table one (1) and figure one (1) show the overall ADC **2004** recidivism rates. The post-release period consists of six months, one-year, and three years, from **1997** through **2004**. In **2003**, there were a total of **6,135** inmates, and in **2004**, there were a total of **6244**, released from ADC (refer to table, year **2003** and **2004**). Within six months of release, **12.9%** for **2003** and **11.2%** for **2004**, returned to prison. Within one year of release, **25.9%** for **2003**, and **22.1%** for **2004**, returned and within three years there was an overall of **47.4%** for **2003** and **44.4%** for **2004** returned to prison. **ADC is experiencing an approximate 49.4% average return rate of inmates released from prison.**

*\* In all tables, the "number of releases", are the number of unduplicated releases in a given year used to generate recidivism rates. Table and Figure 1 do not specify the type of return. They demonstrate an overall return rate, regardless of reason.*

**Table 1**

<u><b>Overall Recidivism Rates</b></u>								
<b>Release Year</b>	<b>Total Number Releases</b>	<b>% Returned 6 Months</b>	<b># Returned 6 Months</b>	<b>% Returned 1 Year</b>	<b># Returned 1 Year</b>	<b>% Returned 3 Years</b>	<b># Returned 3 Years</b>	<b>Total % Returns</b>
1997	4668	15.4%	721	29.9%	1394	49.0%	2289	49.0%
1998	5434	16.5%	898	31.2%	1694	52.0%	2825	50.7%
1999	5330	15.6%	832	30.6%	1629	51.4%	2738	51.4%
2000	5872	14.2%	834	29.0%	1701	51.8%	3040	51.8%
2001	5962	15.9%	948	29.7%	1771	51.4%	3066	51.4%
2002	6015	15.1%	911	28.5%	1716	49.4%	2969	49.4%
<b>2003</b>	<b>6135</b>	<b>12.9%</b>	<b>792</b>	<b>25.9%</b>	<b>1586</b>	<b>47.4%</b>	<b>2905</b>	<b>47.4%</b>
<b>2004</b>	<b>6244</b>	<b>11.2%</b>	<b>698</b>	<b>22.1%</b>	<b>1377</b>	<b>44.4%</b>	<b>2772</b>	<b>44.4%</b>
<b>Averages</b>	<b>5708</b>	<b>14.6%</b>	<b>829</b>	<b>28.3%</b>	<b>1609</b>	<b>49.6%</b>	<b>2826</b>	<b>49.4%</b>

Figure 1



Recidivism Rates: Release Type

Table two (2) demonstrates recidivism rate by type of release. ADC releases inmates by parole with supervision, which is granted by the Parole Board or by discharge (max flat of sentence). In **2003** and **2004**, there were **5,958** inmates and **6,075** inmates, respectively, released by regular parole and **177** inmates and **169** inmates, respectively, discharged. Results indicate that within six months of release in **2003**, **788** or **13.2%** and in **2004**, **693** or **11.4%** inmates released returned as a result of parole violation, while only **4** or **2.3%** in **2003** and **5** or **3.0%** in **2004**, of inmates discharged returned with a new sentence. Total returns of parole releases from ADC demonstrate a **48%** in **2003** and a **45.0%** in **2004** recidivism rates, while discharges show a **24.3%** return rate in **2003** and a **21.9%** in **2004**.

Table 2

Recidivism Rates By Type of Release								
Year	Type of Release	Total Releases	6 Mths Returns	% Returns	1 Year Returns	% Returns	3 Years Returns	% Returns
1997	Paroled - Regular	3964	693	17.5%	1316	33.2%	2129	53.7%
	Discharge	692	28	4.0%	77	11.1%	204	29.5%
1998	Paroled - Regular	4798	870	18.1%	1557	32.5%	2596	54.1%
	Discharge	624	27	4.3%	65	10.4%	156	25.0%
1999	Paroled - Regular	4677	803	17.2%	1557	33.3%	2553	54.6%
	Discharge	643	28	4.4%	71	11.0%	184	28.6%
2000	Paroled - Regular	5691	832	14.6%	1691	29.7%	3005	52.8%
	Discharge	181	2	1.1%	10	5.5%	35	19.3%
2001	Paroled - Regular	5778	947	16.4%	1762	30.5%	3042	52.6%
	Discharge	184	1	0.5%	9	4.9%	24	13.0%
2002	Paroled - Regular	5841	910	15.6%	1707	29.2%	2938	50.3%
	Discharge	174	1	0.6%	9	5.2%	31	17.8%
2003	Paroled - Regular	5958	788	13.2%	1577	26.5%	2861	48.0%
	Discharge	177	4	2.3%	9	5.1%	43	24.3%
2004	Paroled - Regular	6075	693	11.4%	1368	22.5%	2735	45.0%
	Discharge	169	5	3.0%	9	5.3%	37	21.9%
Total Par Reg		36824	5074	13.8%	10958	29.8%	18998	51.6%
Total Disch		2667	92	3.4%	250	9.4%	671	25.2%

**Recidivism Rates: (Return Types) Parolees and Discharges**

Table 3 and Figures (3, 3-1, 3-2, 3-3) show inmates that return to prison for parole violations with a new sentence(s), parole violators returning with a technical violation(s), and discharged (a reconvicted inmate) that returned to prison as a recommitment with a new sentence. Since the opening of the Technical Parole Violator Program, a return to prison for a technical violation while on parole has vastly decreased to no returns for releases of **2003** and **2004**, while a parole violation with a new sentence carries the majority of returns. **Even though a new conviction may also have a technical violation attached, the new conviction in most cases will supersede the technical violation making the new conviction the primary reason for return to prison.** In **2003** and **2004**, as reflected in Table 3 and Figure 3, within three years, **2,668** or **43.5%** and **2,535** or **40.6%**, respectively, of the parolees return to prison as a result of a parole violation with new sentence, **237** or **3.9%** and **237** or **3.8%**, respectively, of the discharged inmates returned as a result of a new charge and there were **zero (0)** returned as a result of a technical violation for both **2003** and **2004**.

**Table 3**

<b>Recidivism Of Parolees And Discharges</b>								
<b>Year</b>	<b>Total</b>	<b>Type of</b>	<b>6 Mths</b>	<b>%</b>	<b>1 Year</b>	<b>%</b>	<b>3 Years</b>	<b>%</b>
	<b>Releases</b>	<b>Return</b>	<b>Returns</b>	<b>Returns</b>	<b>Returns</b>	<b>Returns</b>	<b>Returns</b>	<b>Returns</b>
1997	4668	PV/New Sentence	179	3.8%	326	6.9%	512	10.9%
		PV/Technical	511	10.9%	976	20.9%	1453	31.1%
		Discharge - Reconviction	31	0.7%	92	2.0%	324	7.0%
1998	5434	PV/New Sentence	195	3.6%	378	7.0%	629	11.6%
		PV/Technical	674	12.4%	1167	21.5%	1854	34.1%
		Discharge - Reconviction	29	0.5%	79	1.4%	272	5.0%
1999	5323	PV/New Sentence	217	4.1%	388	7.3%	616	11.6%
		PV/Technical	581	10.9%	1156	21.7%	1848	34.7%
		Discharge - Reconviction	30	0.6%	81	1.6%	309	5.9%
2000	5872	PV/New Sentence	196	3.3%	424	7.2%	795	13.5%
		PV/Technical	633	10.8%	1254	10.6%	2078	14.0%
		Discharge - Reconviction	5	0.1%	23	0.4%	167	2.9%
2001	5962	PV/New Sentence	283	4.7%	540	9.1%	913	15.3%
		PV/Technical	663	11.1%	1211	20.3%	1972	33.1%
		Discharge - Reconviction	2	0.0%	20	0.3%	181	3.0%
2002	6015	PV/New Sentence	793	13.2%	1516	25.2%	2549	42.4%
		PV/Technical	113	1.9%	174	2.9%	215	3.6%
		Discharge - Reconviction	5	0.1%	26	0.4%	205	3.4%
2003	6135	PV/New Sentence	785	12.8%	1558	25.4%	2668	43.5%
		Discharge - Reconviction	7	0.1%	28	0.5%	237	3.9%
2004	6244	PV/New Sentence	686	11.0%	1341	21.5%	2535	40.6%
		Discharge - Reconviction	12	0.2%	36	0.6%	237	3.8%
<b>Total</b>	<b>45653</b>		<b>6630</b>	<b>14.5%</b>	<b>12794</b>	<b>28.0%</b>	<b>22569</b>	<b>49.4%</b>

Figure 3

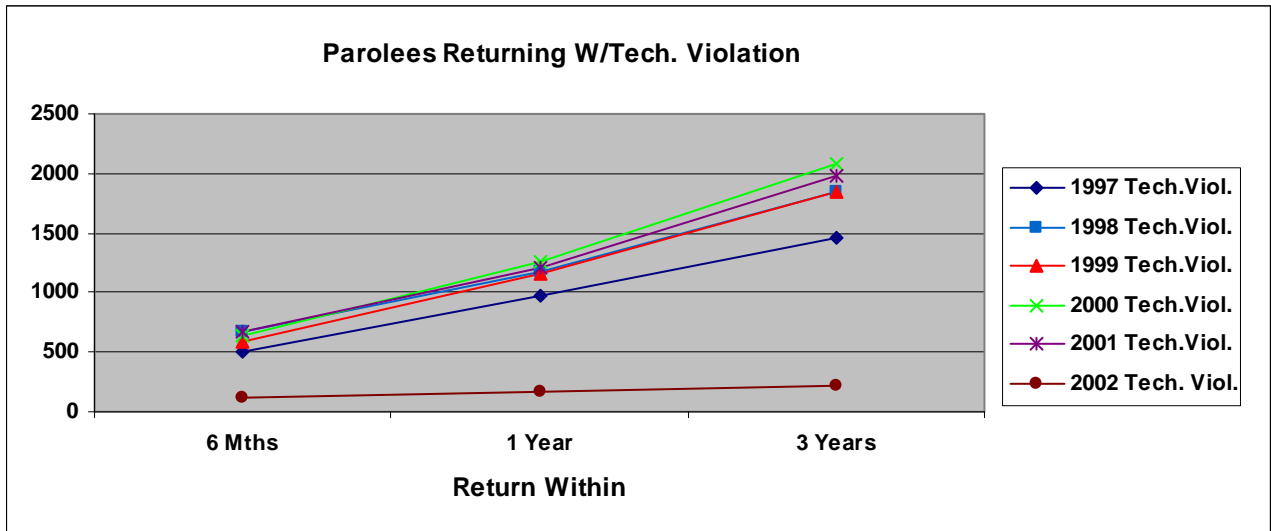


Figure 3-1

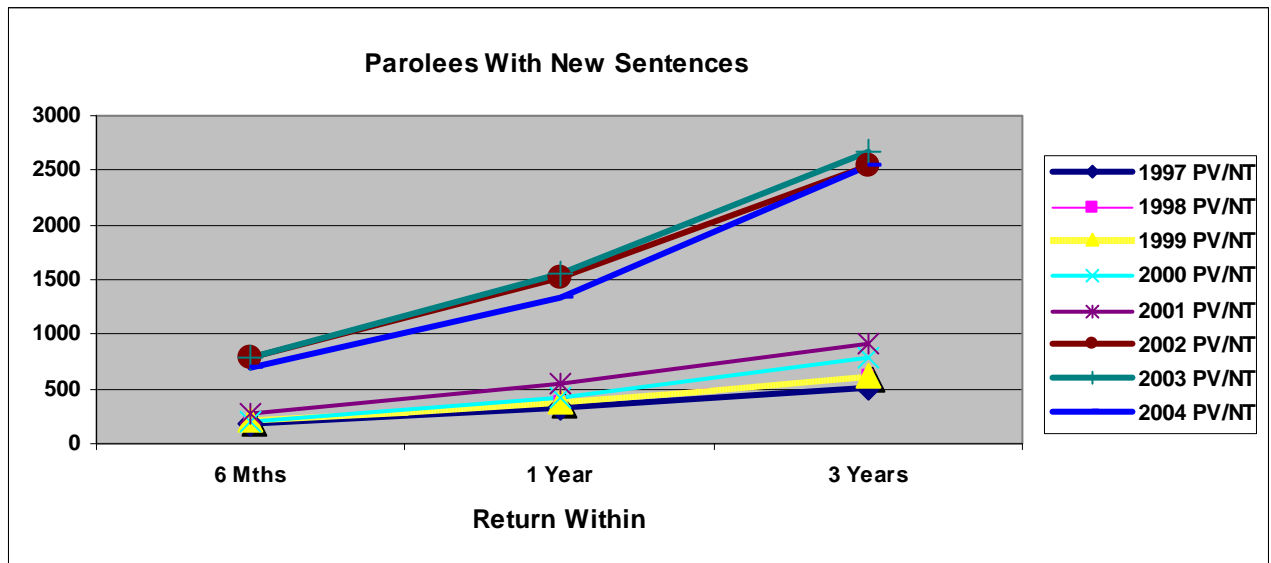


Figure 3-2

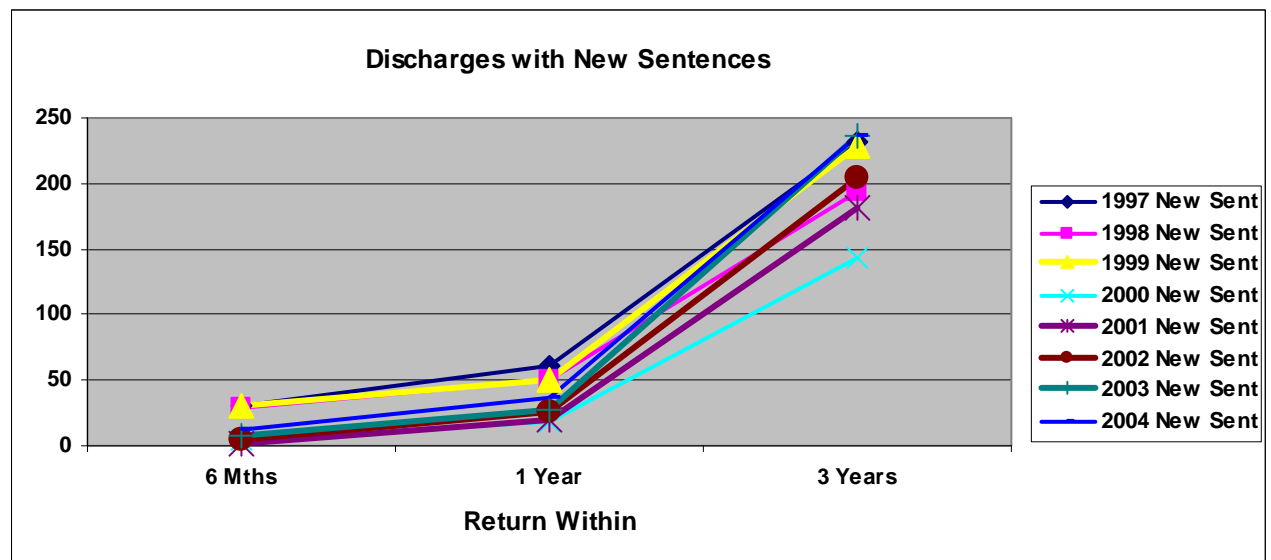


Figure 3-3

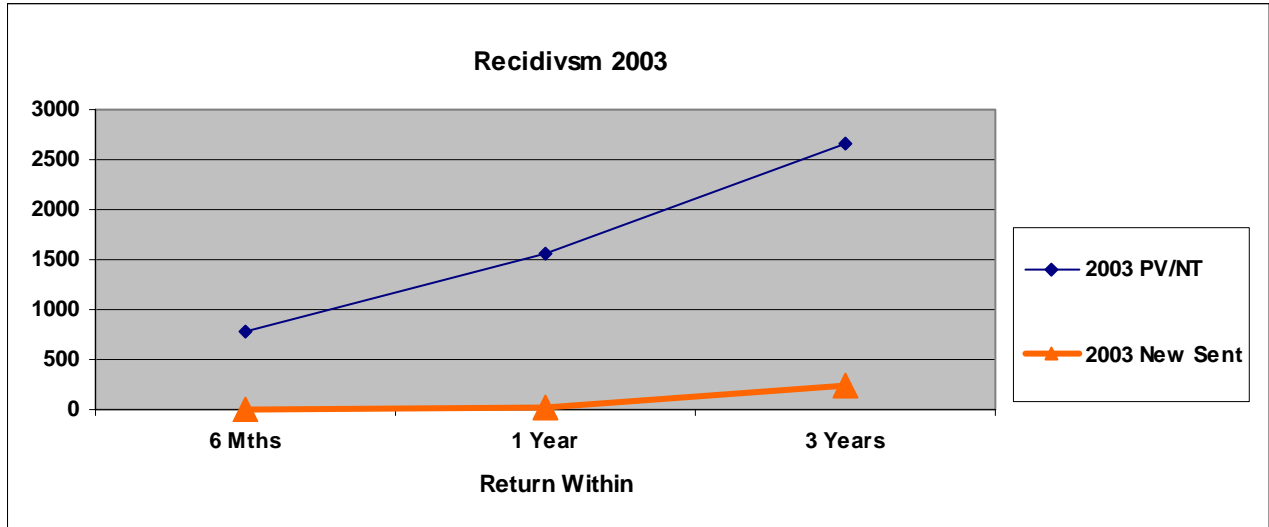
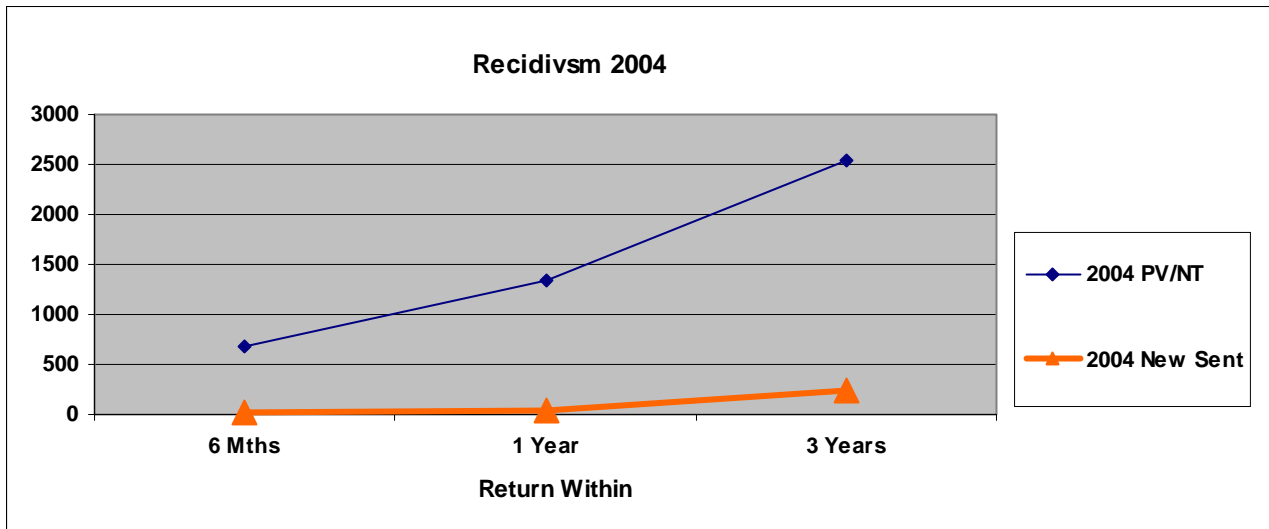


Figure 3-4



**Recidivism Rates: Gender**

Table 4 and Figures 4, 4-1, 4-2 exhibits recidivism rates by gender. In **2003** and **2004**, males increased in return rates over the three-year post release time frame. From six months to one-year, data demonstrated a fairly constant return rate for both males and females; however, by the end of the third year there was a significant increase in males returning to prison. Within each consecutive year, the overall return rate for males increased from **1997** to **2001**, while **2001** to **2004** reflects a **6.4 % decrease** in overall recidivism rates.

Table 4

Recidivism Rates By Gender									
Year	Gender	Total	6 month	%	1 Year	%	3 Years	Total %	Total Inmates
		Releases	Return	Returns	Returns	Returns	Returns	Returns	Not Returning
1997	Female	439	38	8.7%	94	21.4%	162	36.9%	277
	Male	4229	683	16.2%	1300	30.7%	2127	50.3%	2102
1998	Female	512	75	14.6%	123	24.0%	227	44.3%	285
	Male	4922	823	16.7%	1501	30.5%	2528	51.4%	2394
1999	Female	545	58	10.6%	115	21.1%	206	37.8%	339
	Male	4785	774	16.2%	1514	31.6%	2532	52.9%	2253
2000	Female	652	75	11.5%	158	24.2%	264	40.5%	388
	Male	5220	759	14.5%	1543	29.6%	2766	53.0%	2454
2001	Female	625	81	13.0%	140	22.4%	260	41.6%	365
	Male	5337	867	16.2%	1631	30.6%	2806	52.6%	2531
2002	Female	594	67	11.3%	134	22.6%	242	40.7%	320
	Male	5421	844	15.6%	1582	29.2%	2727	50.3%	2426
2003	Female	616	54	8.8%	111	18.0%	215	34.9%	401
	Male	5519	738	13.4%	1475	26.7%	2690	48.7%	2829
2004	Female	551	31	5.6%	56	10.2%	139	25.2%	413
	Male	5693	667	11.7%	1321	23.2%	2633	46.2%	3060

Figure 4

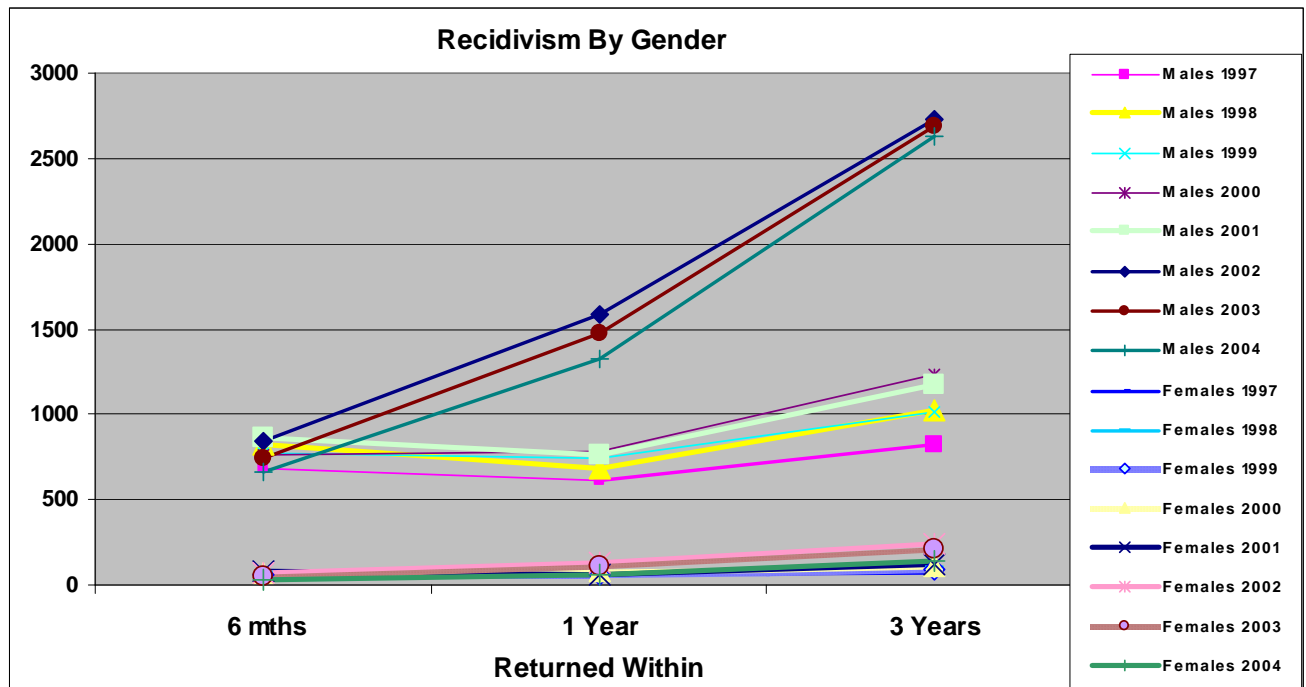


Figure 4-1

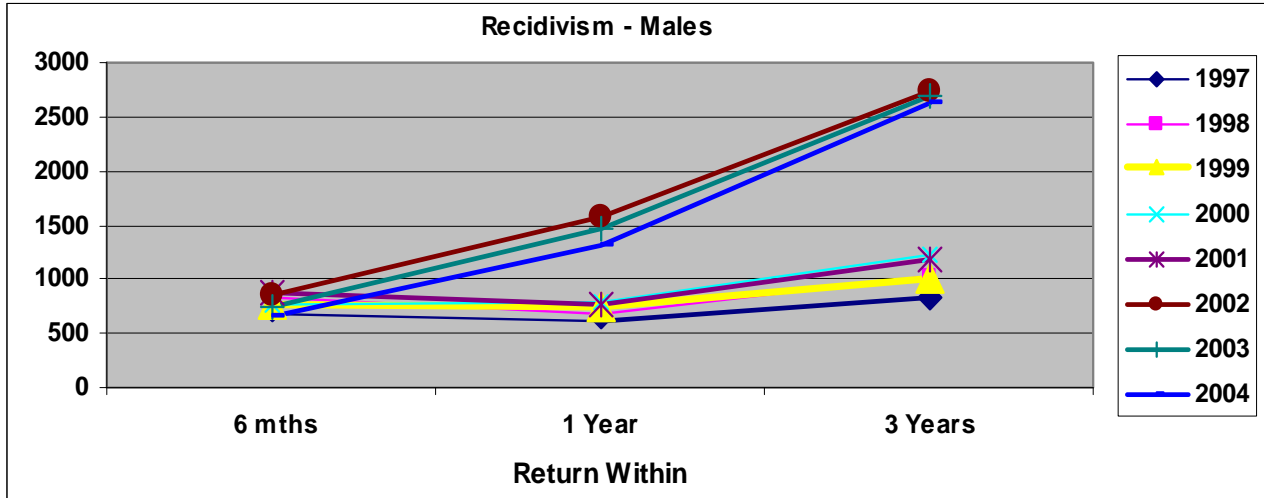
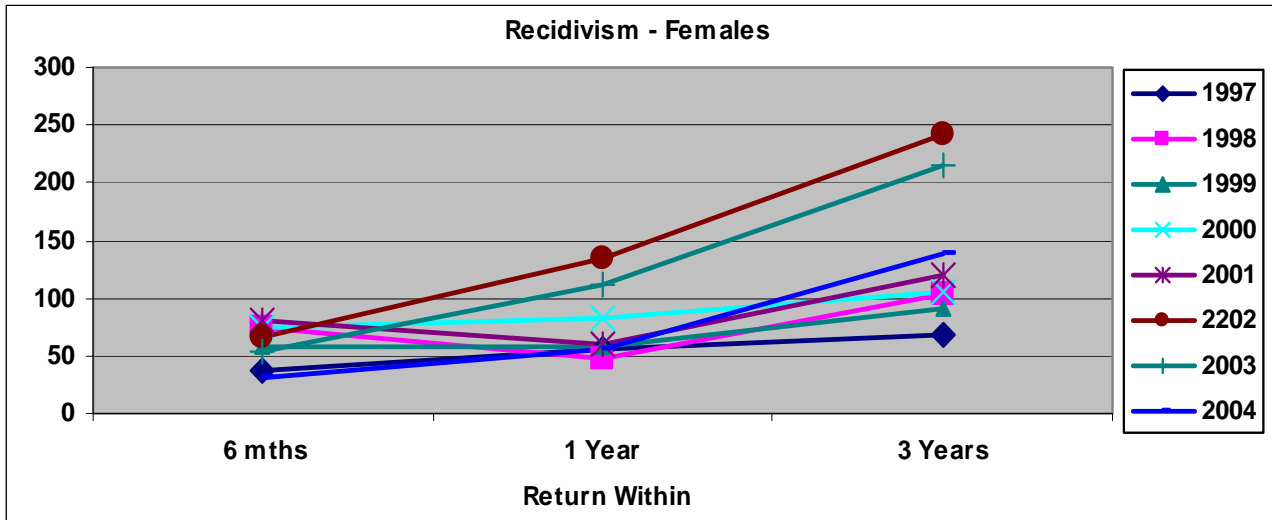


Figure 4-2



Recidivism Rates: Race

Recidivism rates were generated by race for **CY2003** and **CY2004**, respectively, and incorporated time frames of six (6) months, one-year, and three-years. Recidivism rates were based on three areas of ethnic diversity. Within the ADC, the population primarily consists of Caucasian and African-American racial designation, while only a small percentage consists of Hispanic and other. For this report, the Hispanic category consists of Cuban and Mexican racial designations, and the other category incorporates both Asian and Native American. The **2003** and **2004** recidivism addendum study incorporates Caucasian, African-American, Hispanic, and other racial designations to demonstrate recidivism rates by race as provided in Table 5. In **2003**, **3,304** and in **2004**, **3,450** Caucasian inmates were released. Within six (6) months, **467** or **14.1%** and **432** or **12.5%**, respectively, returned to prison. Within one (1) year, **883** or **26.7%** and **786** or **22.8%**, respectively, returned and within three (3) years, **1,531** or **46.3%** and **1,483** or **43.0%**, respectively, returned to prison. For **CY2003** and **CY2004**, African-American inmates have a slightly higher recidivism rate (**48.7%** vs. **46.3%**) and (**46.5%** vs. **43.0%**), respectively, than their Caucasian counterparts (see table 5).



Table 5

2004 Recidivism Rates By Race								
Year	Race	Total	6 Month	%	1 Year	%	3 Years	%
		Releases	Returns	Returns	Returns	Returns	Returns	Returns
1997	Black	2420	413	17.1%	795	32.9%	1268	52.4%
1997	Hispanic	29	2	6.9%	4	13.8%	7	24.1%
1997	Other	16	0	0.0%	0	0.0%	2	12.5%
1997	White	2202	306	13.9%	595	27.0%	1013	46.0%
1998	Black	2685	481	17.9%	877	32.7%	1463	54.5%
1998	Hispanic	25	5	20.0%	7	28.0%	8	32.0%
1998	Other	18	1	5.6%	4	22.2%	9	50.0%
1998	White	2706	411	15.2%	737	27.2%	1275	47.1%
1999	Black	2541	414	16.3%	801	31.5%	1362	53.6%
1999	Hispanic	19	2	10.5%	3	15.8%	5	26.3%
1999	Other	13	0	0.0%	2	15.4%	3	23.1%
1999	White	2757	416	15.1%	822	29.8%	1367	49.6%
2000	Black	2756	401	14.6%	817	29.6%	1512	54.9%
2000	Hispanic	66	6	9.1%	10	15.2%	16	24.2%
2000	Other	62	4	6.5%	5	8.1%	9	14.5%
2000	White	2988	423	14.2%	869	29.1%	1503	50.3%
2001	Black	2718	463	17.0%	839	30.9%	1476	54.3%
2001	Hispanic	64	3	4.7%	10	15.6%	18	28.1%
2001	Other	45	3	6.7%	4	8.9%	8	17.8%
2001	White	3135	479	15.3%	918	29.3%	1564	49.9%
2002	Black	2618	408	15.6%	741	28.3%	1335	51.0%
2002	Hispanic	75	5	6.7%	9	12.0%	13	17.3%
2002	Other	30	0	0.0%	3	10.0%	7	23.3%
2002	White	3292	497	15.1%	962	29.2%	1613	49.0%
2003	Black	2768	321	11.6%	691	25.0%	1349	48.7%
2003	Hispanic	50	4	8.0%	11	22.0%	20	40.0%
2003	Other	13	0	0.0%	1	7.7%	5	38.5%
2003	White	3304	467	14.1%	883	26.7%	1531	46.3%
2004	Black	2711	255	9.4%	573	21.1%	1260	46.5%
2004	Hispanic	64	10	15.6%	14	21.9%	24	37.5%
2004	Other	19	1	5.3%	4	21.1%	5	26.3%
2004	White	3450	432	12.5%	786	22.8%	1483	43.0%

### Recidivism Rates: Age

Age shows to be significantly related to recidivism within the ADC. An inmate's age at his/her last admission was significantly related to return to custody (See table 6). For males, this was fairly evident when reviewing age cohorts of **25-34** as primary, and **35-44** as secondary return age ranges. Females returning to prison also demonstrated increase returns in age ranges of **25-34** and **35-44** (See Figure 6).

Table 6

<b>2003 Recidivism by Age (males)</b>					
<b>Gender</b>	<b>AGE</b>	<b>6 Months</b>	<b>1 Year</b>	<b>3 Years</b>	<b>Total %</b>
		<b>Returns</b>	<b>Returns</b>	<b>Returns</b>	<b>Returns</b>
<b>Male</b>	<b>&lt;=17</b>	0	0	0	0.0%
	<b>18 - 24</b>	176	340	629	23.4%
	<b>25 - 34</b>	302	596	1064	39.6%
	<b>35 - 44</b>	197	414	755	28.1%
	<b>45 - 54</b>	57	114	219	8.1%
	<b>55 - 64</b>	5	9	19	0.7%
	<b>&gt;=65</b>	1	2	4	0.1%
	<b>Total</b>	<b>738</b>	<b>1475</b>	<b>2690</b>	<b>100.0%</b>

Table 6.1

<b>2003 Recidivism by Age (females)</b>					
<b>Gender</b>	<b>AGE</b>	<b>6 Months</b>	<b>1 Year</b>	<b>3 Years</b>	<b>Total %</b>
		<b>Returns</b>	<b>Returns</b>	<b>Returns</b>	<b>Returns</b>
<b>Female</b>	<b>&lt; = 17</b>	0	0	0	0.0%
	<b>18 - 24</b>	6	10	18	8.4%
	<b>25 - 34</b>	27	58	108	50.2%
	<b>35 - 44</b>	14	32	71	33.0%
	<b>45 - 54</b>	6	10	17	7.9%
	<b>55 - 64</b>	1	1	1	0.5%
	<b>&gt;=65</b>	0	0	0	0.0%
	<b>Total</b>	<b>54</b>	<b>111</b>	<b>215</b>	<b>100.0%</b>

Table 6.2

<b>2004 Recidivism by Age (males)</b>					
<b>Gender</b>	<b>AGE</b>	<b>6 Months</b>	<b>1 Year</b>	<b>3 Years</b>	<b>Total %</b>
		<b>Returns</b>	<b>Returns</b>	<b>Returns</b>	<b>Returns</b>
<b>Male</b>	<b>&lt;=17</b>	1	2	3	0.1%
	<b>18 - 24</b>	216	401	717	26.3%
	<b>25 - 34</b>	330	633	1050	38.5%
	<b>35 - 44</b>	245	451	764	28.0%
	<b>45 - 54</b>	50	90	181	6.6%
	<b>55 - 64</b>	1	4	10	0.4%
	<b>&gt;=65</b>	1	1	2	0.1%
	<b>Total</b>	<b>844</b>	<b>1582</b>	<b>2727</b>	<b>100.0%</b>

Table 6.3

2004 Recidivism by Age (females)					
Gender	AGE	6 Months Returns	1 Year Returns	3 Years Returns	Total % Returns
Female	<= 17	0	0	1	0.4%
	18 - 24	8	18	29	12.0%
	25 - 34	26	52	106	43.8%
	35 - 44	29	54	91	37.6%
	45 -54	3	9	14	5.8%
	55 - 64	1	1	1	0.4%
	>=65	0	0	0	0.0%
	<b>Total</b>	<b>67</b>	<b>134</b>	<b>242</b>	<b>100.0%</b>

Figure 6

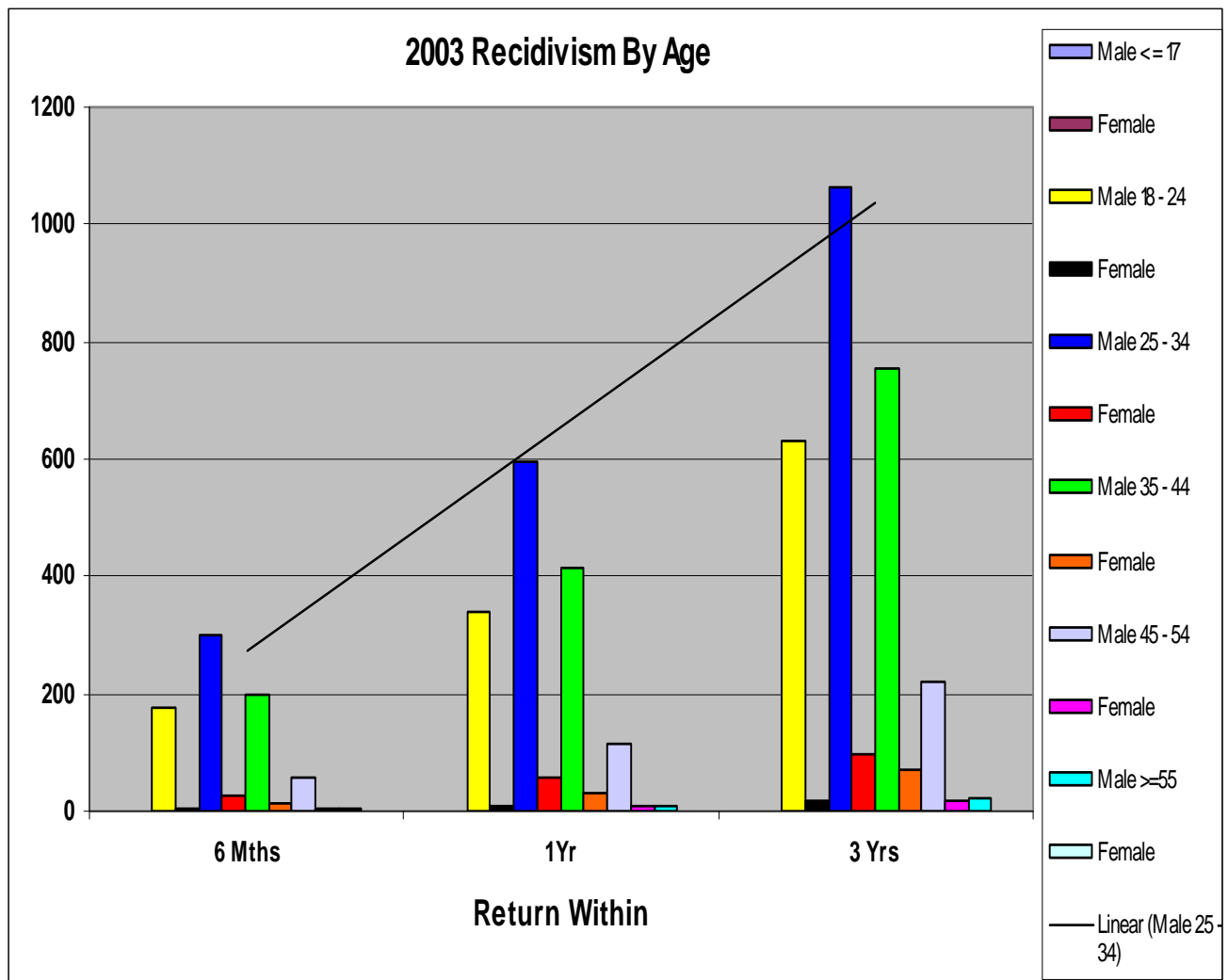
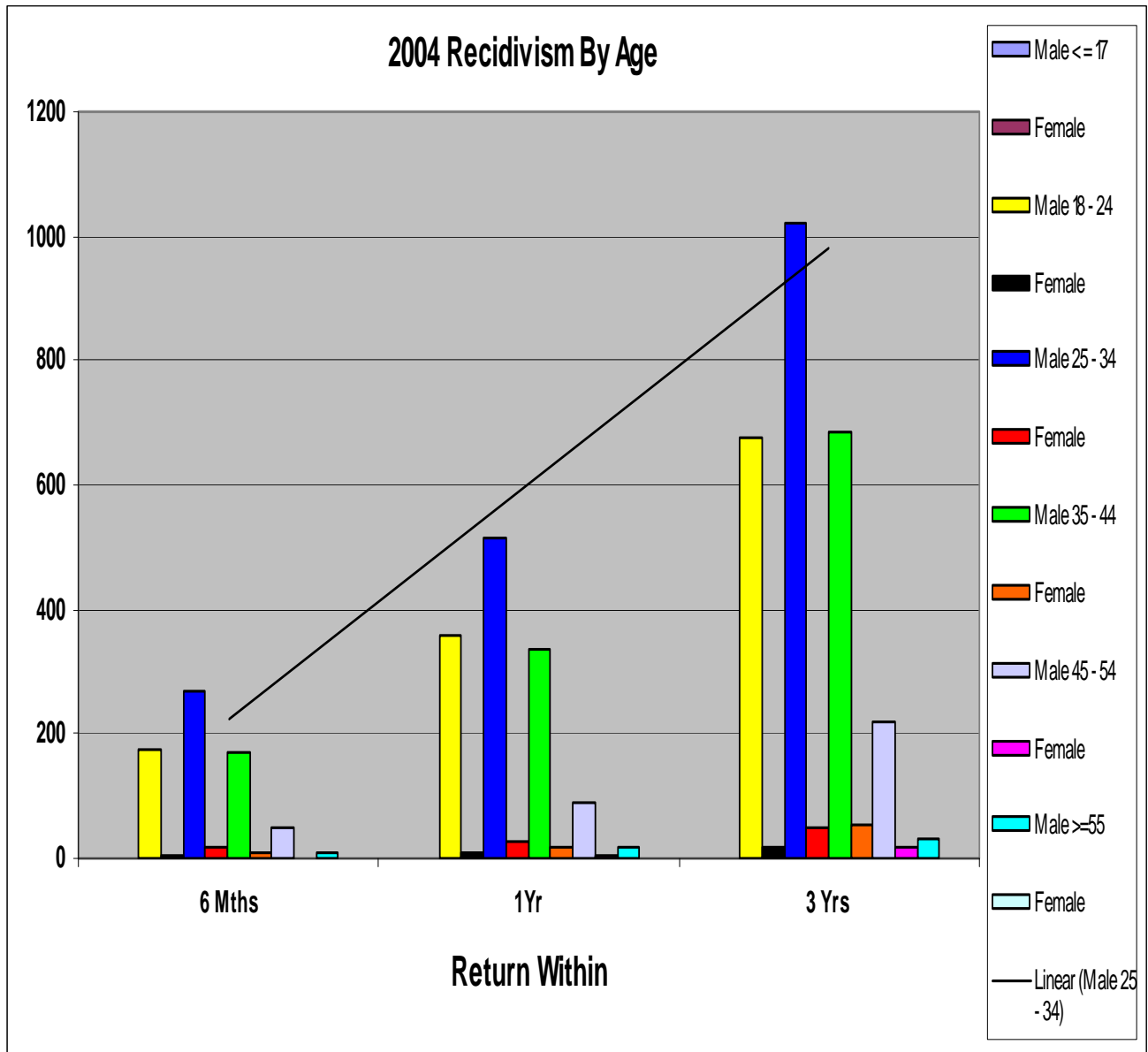


Figure 6.1



**Recidivism Rates: Offense**

Table Seven (7) reflects the return rates as a result of the type of offense, for a select period of time. A variety of offenses were analyzed in order to understand the breadth and depth of recidivism rates by offense and the return to prison within a three-year time frame. For clarity, Table 7 denotes the offense category, the actual number of releases/returns for the years **2003** and **2004**, the actual numbers and percent of returns within three (3) years for each category.

Table 7

Three Year Recidivism Rates by Offense Category						
Offense Category	2003 Releases	Ret w/in 3 yrs		2004 Releases	Ret w/in 3	yrs
Absconding	3	0	0.0%	2	0	0.0%
Abuse of Adults	0	0	0.0%	2	1	50.0%
Accomplice	0	0	0.0%	1	0	0.0%
Advertise Drug Paraphenalia	470	212	45.1%	390	152	39.0%
Agg. Assault on Corr. Employee	1	0	0.0%			0.0%
Agg. Assault on Family/Houshld	7	5	71.4%	13	5	38.5%
Aggravated Assault	176	110	62.5%	168	84	50.0%
Aggravated Robbery	169	85	50.3%	136	51	37.5%
Aiding Consumption of Offense	1	1	100.0%			0.0%
Arson	29	10	34.5%	33	17	51.5%
Battery 1st Degree	142	59	41.5%	114	51	44.7%
Battery 2nd Degree	290	150	51.7%	204	94	46.1%
Battery 3rd Degree	2	1	50.0%	1	0	0.0%
Breaking and Entering	84	48	57.1%	137	80	58.4%
Burglary	24	14	58.3%	150	97	64.7%
Capital Murder	0	0	0.0%	3	1	33.3%
Carnal Abuse 1st Degree	15	9	60.0%	8	4	50.0%
Carnal Abuse 2nd Degree	4	2	50.0%	3	1	33.3%
Carnal Abuse 3rd Degree	19	8	42.1%	8	3	37.5%
Commercial Burglary	41	28	68.3%	130	71	54.6%
Communicating False Alarm	0	0	0.0%	1	0	0.0%
Compounding	1	0	0.0%	0	0	0.0%
Computer Fraud	0	0	0.0%	1	1	100.0%
Continuing Criminal Enterprise	0	0	0.0%	1	1	100.0%
Criminal Attempt	73	28	38.4%	129	51	39.5%
Criminal Conspiracy	52	26	50.0%	96	39	40.6%
Criminal Mischief 1st Degree	25	10	40.0%	38	19	50.0%
Criminal Mischief 2nd Degree	6	3	50.0%	4	3	75.0%
Criminal Solicitation	3	0	0.0%	0	0	0.0%
Criminal Use Prohibited Weapon	0	0	0.0%	2	0	0.0%
Defrauding Secured Creditors	0	0	0.0%	1	1	100.0%
Discharge Firearm From Vehicle	5	2	40.0%	8	1	12.5%
Dist/Poss/View Sex Explicit	0	0	0.0%	3	0	0.0%
Domestic Battering 1st Degree	15	4	26.7%	5	3	60.0%
Domestic Battering 2nd Degree	20	12	60.0%	30	11	36.7%
Domestic Battering 3rd Degree	59	33	55.9%	44	24	54.5%
Duty to Give Info & Render Aid	1	0	0.0%	0	0	0.0%
Emphy, Auth child<17 Sex Perf	0	0	0.0%	1	1	100.0%
Endanger Welf. Of Incompet. 1st Deg.	1	0	0.0%	0	0	0.0%
Endanger Welfare Minor 1st Degree	1	1	100.0%	2	1	50.0%
Engage in Viol Crim Group Act	0	0	0.0%	5	2	40.0%
Escape 1st Degree	1	1	100.0%	2	1	50.0%
Escape 2nd Degree	10	6	60.0%	12	8	66.7%
Exposing One to HIV	5	1	20.0%	2	0	0.0%
Fail to Register Child/Sex Offender	8	3	37.5%	8	3	37.5%
Fail Stop Acc Inj/Death	1		0.0%	4	3	75.0%
Fail, to Keep Records Dist Drg	34	17	50.0%	35	9	25.7%
Failure to Appear	50	22	44.0%	53	26	49.1%
False Imprisonment 1st Degree	28	17	60.7%	22	11	50.0%
Filing a False Report	5	4	80.0%	3	0	0.0%
Financial Identity Fraud	2	1	50.0%	4	2	50.0%
Fleeing	28	12	42.9%	35	17	48.6%
Forgery	243	130	53.5%	285	149	52.3%
Fraud Use of Credit Card	5	4	80.0%	15	10	66.7%
Furnishing Prohibited Articles	5	2	40.0%	7	5	71.4%
Hindering Apprehension or Proc	7	3	42.9%	10	3	30.0%

Three Year Recidivism Rates by Offense Category						
Offense Category	2003 Releases	Ret w/in 3 yrs		2004 Releases	Ret w/in 3	yrs
Hot Check Violation	84	31	36.9%	97	29	29.9%
Incest	6	2	33.3%	12	2	16.7%
Inciting Riot	1	0	0.0%	0	0	0.0%
Indescent Exposure	2	0	0.0%	0	0	0.0%
Interference With Custody	0	0	0.0%	1	1	100.0%
Interfering With Law Enf Offic	0	0	0.0%	1	0	0.0%
Intro Cont Subs Body/Another	0	0	0.0%	1	0	0.0%
Keeping a Gambling House	0	0	0.0%	1	0	0.0%
Kidnapping	25	11	44.0%	15	8	53.3%
Manslaughter	54	27	50.0%	33	13	39.4%
Manu/Del/Poss Control Substance	909	420	46.2%	1268	511	40.3%
Murder 1st Degree	57	14	24.6%	50	10	20.0%
Murder 2nd Degree	72	29	40.3%	59	21	35.6%
Negligent Homicide	14	4	28.6%	8	2	25.0%
Non-Support	19	8	42.1%	12	5	41.7%
Obtain Signature by Deception	0	0	0.0%	1	0	0.0%
Offense Com. Presence of Child	1	1	100.0%			0.0%
Permit Child Abuse	1		0.0%	1	0	0.0%
Poss Anhyd Ammon Unlaw/Container	3		0.0%	2	2	100.0%
Poss Firearm Certain Person	36	14	38.9%	73	35	47.9%
Poss. Of Firearm - School	2	1	50.0%			0.0%
Poss of Defaced Firearm	1		0.0%	2	0	0.0%
Poss W/Intent to Mfg	5	2	40.0%	5	0	0.0%
Possession of Drug Paraphernal	2	1	50.0%	0	0	0.0%
Possession of Ephedrine	6	3	50.0%	5	2	40.0%
Promoting Prostitution 1st Degree	0	0	0.0%	1	0	0.0%
Rape	50	22	44.0%	64	22	34.4%
Reckless Burning	1	0	0.0%	4	3	75.0%
Residential Burglary	134	82	61.2%	211	130	61.6%
Robbery	504	328	65.1%	406	246	60.6%
Sexual Abuse 1st Degree	104	47	45.2%	95	33	34.7%
Sexual Assault	14	6	42.9%	21	7	33.3%
Sexual Indecency With a Child	0	0	0.0%	1	1	100.0%
Sexual Solicitation of A Child	6	4	66.7%	7	2	28.6%
Sexual Solicitation of A Child	0	0	0.0%	4	1	25.0%
Simul Poss of Drugs/Firearm	3	1	33.3%	13	2	15.4%
Stalking	1	1	100.0%	2	0	0.0%
Tampering With Physical Evidence	4	2	50.0%	2	2	100.0%
Terroristic Act	23	10	43.5%	32	12	37.5%
Terroristic Threatening 1st Deg	104	60	57.7%	78	43	55.1%
Theft By Receiving	242	153	63.2%	267	154	57.7%
Theft of Leased Property	10	3	30.0%	5	1	20.0%
Theft of Prop Lost, Mislaid, Del	1	1	100.0%		0	0.0%
Theft of Property	1379	864	62.7%	905	509	56.2%
Theft of Public Benefits	1	1	100.0%	3	1	33.3%
Theft of Services	2	2	100.0%	3	1	33.3%
Trans, Distr. Mat.Deplctg Child	2		0.0%	2	0	0.0%
Unlawful Copy/Sale of Record	1	0	0.0%	0	0	0.0%
Use of Anothers Prop for Crime	0	0	0.0%	2	0	0.0%
Use of Communication Facility	1	1	100.0%		0	0.0%
Viol of a Minor 1st Degree	0	0	0.0%	2	0	0.0%
Viol Omb DWI Act 4th Offense	70	23	32.9%	95	35	36.8%
Violation of Medicaid Fraud AC	1	0	0.0%	0	0	0.0%
Violation of Minor - 1st Degree	1	0	0.0%	0	0	0.0%
Violation of Minor - 2nd Degree	4	2	50.0%	0	0	0.0%
Wife Battering 1st Degree	1	0	0.0%	0	0	0.0%
Worker's Comp Fraud	0	0	0.0%	1	0	0.0%

