



Arkansas

2005 Recidivism Study

George Brewer, Research and Planning Administrator
Brenda K. Wilson, Management Project Analyst

2008

1. Overall Recidivism rate has decreased from 44.4% in 2004 to 41.4% in 2005, a 3.0% variance (Table 1, pg. 2).
2. At a three-year post release, 2005 recidivism rates increased from (7.4%) the first 6 months to (41.4%) in three years, a 34% overall increase (Table 1, pg. 2).
3. Recidivism rates, over three years, for paroled inmates (42.1%) were significantly higher than that of discharged inmates (17.8%), in 2005 (Table 2, pg.3).
4. For 2005 paroles and discharges, return rates increased significantly throughout the three-year post return (Table 2, pg. 3).
5. Parole Violators with New Sentence, within a three-year post release, accounted for 90.4% of the recidivists. (Table 3, pg. 4).
6. 2005 recidivism rates, for male offenders, show a three-year post return rate of 43.3% as compared to a return rate of 23% for females (Table 4, pg. 7).
7. An overall three-year post release for CY 2005 demonstrates that 46.6% of blacks and 38.1% of whites return to prison. While the recidivism rate for blacks remained about the same from the previous year, the rate for whites dropped by 11% from the previous year (Table 5, pg. 10).
8. For 2005 releases and within a three-year post release and a return to prison, males within the range of 25-34 and females within the range of 35-44 age range demonstrated the highest total return rates (Table 6, Pg. 11).

Arkansas' Recidivism Study (Addendum)

The **2005** recidivism research is an addendum to the original **1997-1999** study produced in **2003** and to the addendums of **2000, 2001, 2002, 2003** and **2004** produced in prior years. This addendum was prepared by the Arkansas Department of Correction's Research and Planning Division. The addendum reviews the return rates of inmates released from custody in **CY2005**, as compared to prior years. The data for this research was obtained from the ADC electronic Offender Management Information System (eOMIS). If an individual was released **January 1, 2005** through **December 31, 2005**, the data provided reflects returns for a full three-year post release. All charts and tables reflect a three-year post release review and utilized strictly for clarity and ease to the reader.

The study is categorized into return rates of six (6) months, one (1) year, and three (3) years, respectively. As with the 2003 and 2004 addendum regarding a three-year post release of inmates produced in 2007, the ADC Research and Planning Section will continue to study, track and update trends in release/return rates annually.

Overall Recidivism Rates

As demonstrated, table one (1) and figure one (1) show the overall ADC **2005** recidivism rates. The post-release period consists of six months, one-year, and three years, from **1997** through **2005**. In **2005**, there were a total of **5,657** inmates released from ADC (refer to table, year 2005). Within six months of release, **7.4%** returned to prison. Within one year of release, **18.3%** returned and within three years there was an overall of **41.4%** returned to prison. ADC is experiencing an approximate **48.5%** average return rate of inmates released from prison.

**In all tables, the "number of releases", are the number of unduplicated releases in a given year used to generate recidivism rates. Table and Figure 1 do not specify the type of return. They demonstrate an overall return rate, regardless of reason.*

Table 1

| Overall Recidivism Rates | | | | | | | | |
|---------------------------------|-----------------------|----------------------------|----------------------------|--------------------------|--------------------------|---------------------------|---------------------------|------------------------|
| Release Year | Total Releases | % Returned 6 Months | # Returned 6 Months | % Returned 1 Year | # Returned 1 Year | % Returned 3 Years | # Returned 3 Years | Total % Returns |
| 1997 | 4,668 | 15.4% | 721 | 29.9% | 1,394 | 49.0% | 2,289 | 49.0% |
| 1998 | 5,434 | 16.5% | 898 | 31.2% | 1,694 | 52.0% | 2,825 | 50.7% |
| 1999 | 5,330 | 15.6% | 832 | 30.6% | 1,629 | 51.4% | 2,738 | 51.4% |
| 2000 | 5,872 | 14.2% | 834 | 29.0% | 1,701 | 51.8% | 3,040 | 51.8% |
| 2001 | 5,962 | 15.9% | 948 | 29.7% | 1,771 | 51.4% | 3,066 | 51.4% |
| 2002 | 6,015 | 15.1% | 911 | 28.5% | 1,716 | 49.4% | 2,969 | 49.4% |
| 2003 | 6,135 | 12.9% | 792 | 25.9% | 1,586 | 47.4% | 2,905 | 47.4% |
| 2004 | 6,244 | 11.2% | 698 | 22.1% | 1,377 | 44.4% | 2,772 | 44.4% |
| 2005 | 5,657 | 7.4% | 418 | 18.3% | 1,036 | 41.4% | 2,344 | 41.4% |
| Averages | 5,702 | 13.8% | 784 | 27.2% | 1,545 | 48.7% | 2,772 | 48.5% |

Recidivism Rates: Release Type

Table two (2) demonstrates recidivism rate by type of release. ADC releases inmates by parole with supervision, which is granted by the Parole Board or by discharge (max flat of sentence). In 2005, there were 5,505 inmates released by regular parole and 152 inmates, discharged. Results indicate that within six months of release in 2005, 413 or 7.5% inmates released returned as a result of a parole violation, while only 5 or 3.3% of inmates discharged returned with a new sentence. Total returns of parole releases from ADC demonstrate a 42.1% in 2005, while discharges show a 17.8% return rate.

Table 2

| Recidivism Rates By Type of Release | | | | | | | | |
|--|--------------------------|-----------------------|-----------------------|------------------|-----------------------|------------------|------------------------|------------------|
| Year | Type of Release | Total Releases | 6 Mths Returns | % Returns | 1 Year Returns | % Returns | 3 Years Returns | % Returns |
| 1997 | Paroled - Regular | 3,964 | 693 | 17.5% | 1,316 | 33.2% | 2,129 | 53.7% |
| | Discharge | 692 | 28 | 4.0% | 77 | 11.1% | 204 | 29.5% |
| 1998 | Paroled - Regular | 4,798 | 870 | 18.1% | 1,557 | 32.5% | 2,596 | 54.1% |
| | Discharge | 624 | 27 | 4.3% | 65 | 10.4% | 156 | 25.0% |
| 1999 | Paroled - Regular | 4,677 | 803 | 17.2% | 1,557 | 33.3% | 2,553 | 54.6% |
| | Discharge | 643 | 28 | 4.4% | 71 | 11.0% | 184 | 28.6% |
| 2000 | Paroled - Regular | 5,691 | 832 | 14.6% | 1,691 | 29.7% | 3,005 | 52.8% |
| | Discharge | 181 | 2 | 1.1% | 10 | 5.5% | 35 | 19.3% |
| 2001 | Paroled - Regular | 5,778 | 947 | 16.4% | 1,762 | 30.5% | 3,042 | 52.6% |
| | Discharge | 184 | 1 | 0.5% | 9 | 4.9% | 24 | 13.0% |
| 2002 | Paroled - Regular | 5,841 | 910 | 15.6% | 1,707 | 29.2% | 2,938 | 50.3% |
| | Discharge | 174 | 1 | 0.6% | 9 | 5.2% | 31 | 17.8% |
| 2003 | Paroled - Regular | 5,958 | 788 | 13.2% | 1,577 | 26.5% | 2,861 | 48.0% |
| | Discharge | 177 | 4 | 2.3% | 9 | 5.1% | 43 | 24.3% |
| 2004 | Paroled - Regular | 6,075 | 693 | 11.4% | 1,368 | 22.5% | 2,735 | 45.0% |
| | Discharge | 169 | 5 | 3.0% | 9 | 5.3% | 37 | 21.9% |
| 2005 | Paroled - Regular | 5,505 | 413 | 7.5% | 1,025 | 18.6% | 2,317 | 42.1% |
| | Discharge | 152 | 5 | 3.3% | 11 | 7.2% | 27 | 17.8% |
| Total | Paroled - Regular | 42,329 | 6,949 | 16.4% | 11,983 | 28.3% | 21,315 | 50.4% |
| | Total Discharged | 2,819 | 97 | 3.4% | 261 | 9.3% | 698 | 24.8% |

Recidivism Rates: (Return Types) Parolees and Discharges

Table 3 and Figures (3, 3-1, 3-2, 3-3) show inmates that return to prison for parole violations with a new sentence(s), parole violators returning with a technical violation(s), and discharged (a reconvicted inmate) that returned to prison as a recommitment with a new sentence. Since the opening of the Technical Parole Violator Program, a return to prison for a technical violation while on parole has vastly decreased to no returns for releases of 2005, while a parole violation with a new sentence carries the majority of returns. Even though a new conviction may also have a technical violation attached, the new conviction in most cases will supersede the technical violation making the new conviction the primary reason for return to prison. In 2005, as reflected in Table 3 and Figure 3, within three years, 2,120 or 37.5% of the parolees return to prison as a result of a parole violation with new sentence and 224 or 4.0% of the discharged inmates returned as a result of a new charge and there were zero (0) returned as a result of a technical violation.

Table 3

| Recidivism Of Parolees And Discharges | | | | | | | | |
|---------------------------------------|----------------|--------------------------|----------------|--------------|----------------|--------------|-----------------|--------------|
| Year | Total Releases | Type of Return | 6 Mths Returns | % Returns | 1 Year Returns | % Returns | 3 Years Returns | % Returns |
| | | | | | | | | |
| 1997 | 4,668 | PV/New Sentence | 179 | 3.8% | 326 | 6.9% | 512 | 10.9% |
| | | PV/Technical | 511 | 10.9% | 976 | 20.9% | 1,453 | 31.1% |
| | | Discharge - Reconviction | 31 | 0.7% | 92 | 2.0% | 324 | 7.0% |
| 1998 | 5,434 | PV/New Sentence | 195 | 3.6% | 378 | 7.0% | 629 | 11.6% |
| | | PV/Technical | 674 | 12.4% | 1,167 | 21.5% | 1,854 | 34.1% |
| | | Discharge - Reconviction | 29 | 0.5% | 79 | 1.4% | 272 | 5.0% |
| 1999 | 5,323 | PV/New Sentence | 217 | 4.1% | 388 | 7.3% | 616 | 11.6% |
| | | PV/Technical | 581 | 10.9% | 1,156 | 21.7% | 1,848 | 34.7% |
| | | Discharge - Reconviction | 30 | 0.6% | 81 | 1.6% | 309 | 5.9% |
| 2000 | 5,872 | PV/New Sentence | 196 | 3.3% | 424 | 7.2% | 795 | 13.5% |
| | | PV/Technical | 633 | 10.8% | 1,254 | 10.6% | 2,078 | 14.0% |
| | | Discharge - Reconviction | 5 | 0.1% | 23 | 0.4% | 167 | 2.9% |
| 2001 | 5,962 | PV/New Sentence | 283 | 4.7% | 540 | 9.1% | 913 | 15.3% |
| | | PV/Technical | 663 | 11.1% | 1,211 | 20.3% | 1,972 | 33.1% |
| | | Discharge - Reconviction | 2 | 0.0% | 20 | 0.3% | 181 | 3.0% |
| 2002 | 6,015 | PV/New Sentence | 793 | 13.2% | 1,516 | 25.2% | 2,549 | 42.4% |
| | | PV/Technical | 113 | 1.9% | 174 | 2.9% | 215 | 3.6% |
| | | Discharge - Reconviction | 5 | 0.1% | 26 | 0.4% | 205 | 3.4% |
| 2003 | 6,135 | PV/New Sentence | 785 | 12.8% | 1,558 | 25.4% | 2,668 | 43.5% |
| | | Discharge - Reconviction | 7 | 0.1% | 28 | 0.5% | 237 | 3.9% |
| 2004 | 6,244 | PV/New Sentence | 686 | 11.0% | 1,341 | 21.5% | 2,535 | 40.6% |
| | | Discharge - Reconviction | 12 | 0.2% | 36 | 0.6% | 237 | 3.8% |
| 2005 | 5,657 | PV/New Sentence | 407 | 7.2% | 999 | 17.7% | 2,120 | 37.5% |
| | | Discharge - Reconviction | 11 | 0.2% | 37 | 0.7% | 224 | 4.0% |
| | | | | | | | | |
| Total | 51,310 | | 7,048 | 13.7% | 13,830 | 27.0% | 24,913 | 48.6% |

Figure 3



Figure 3-1

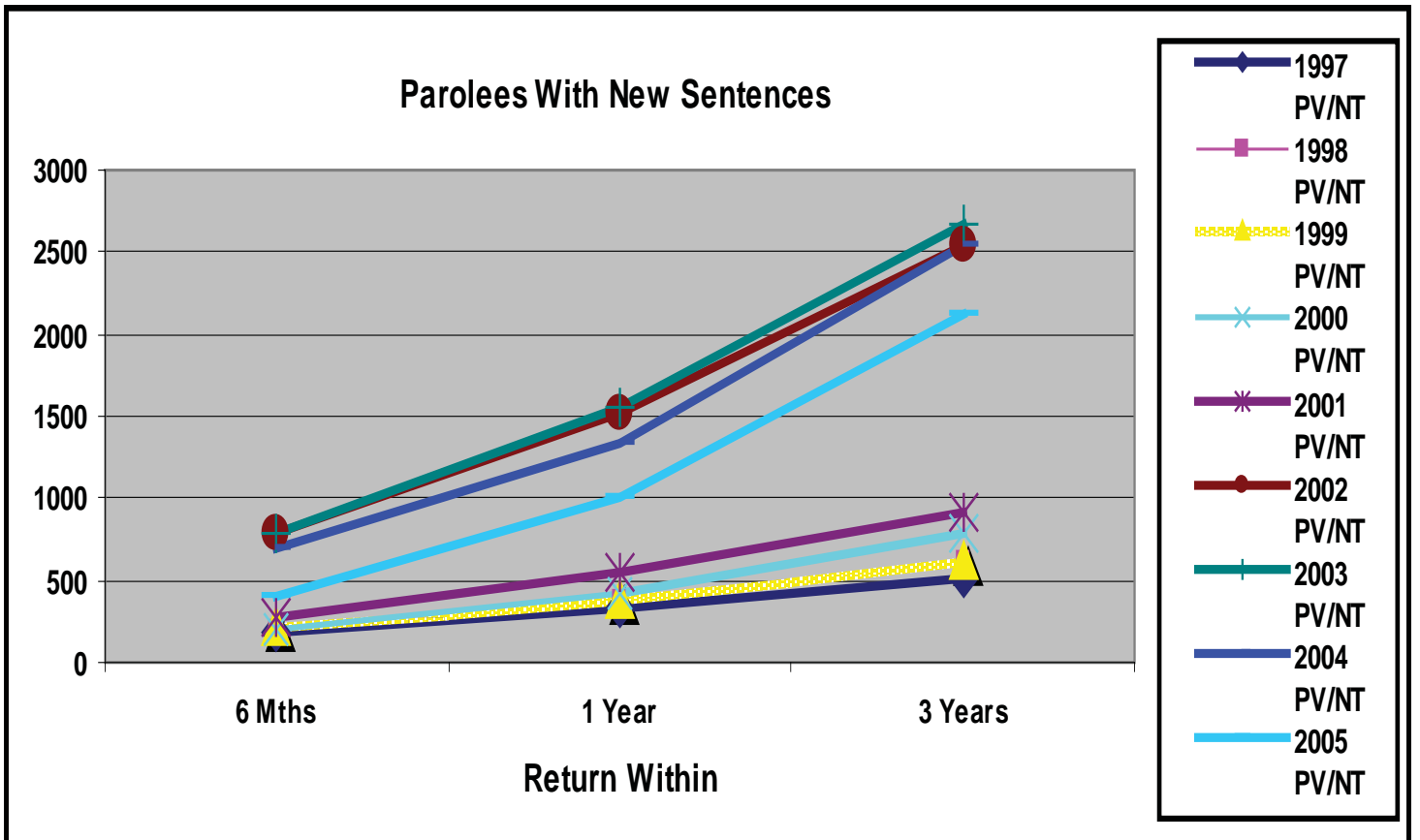


Figure 3-2

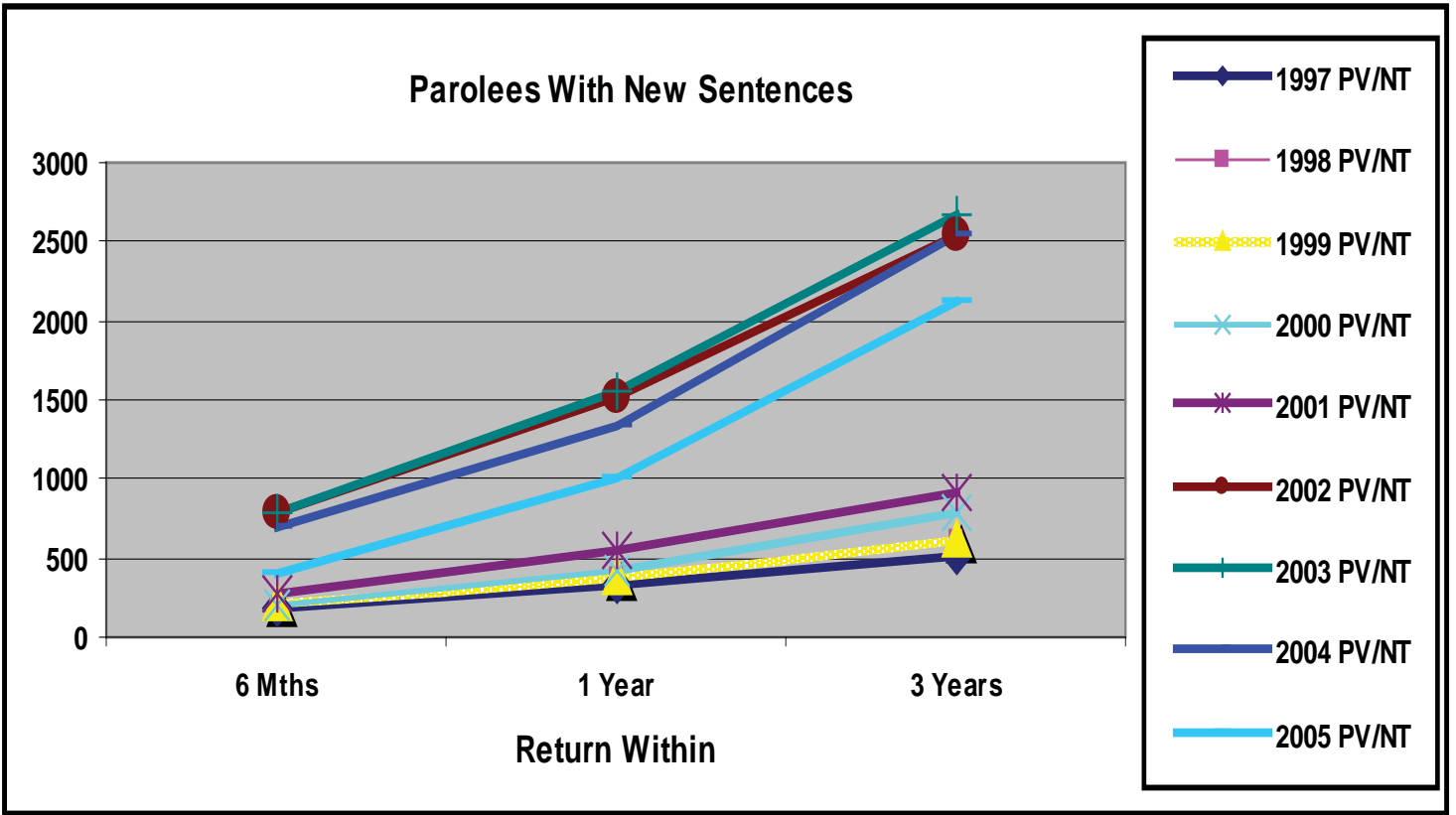
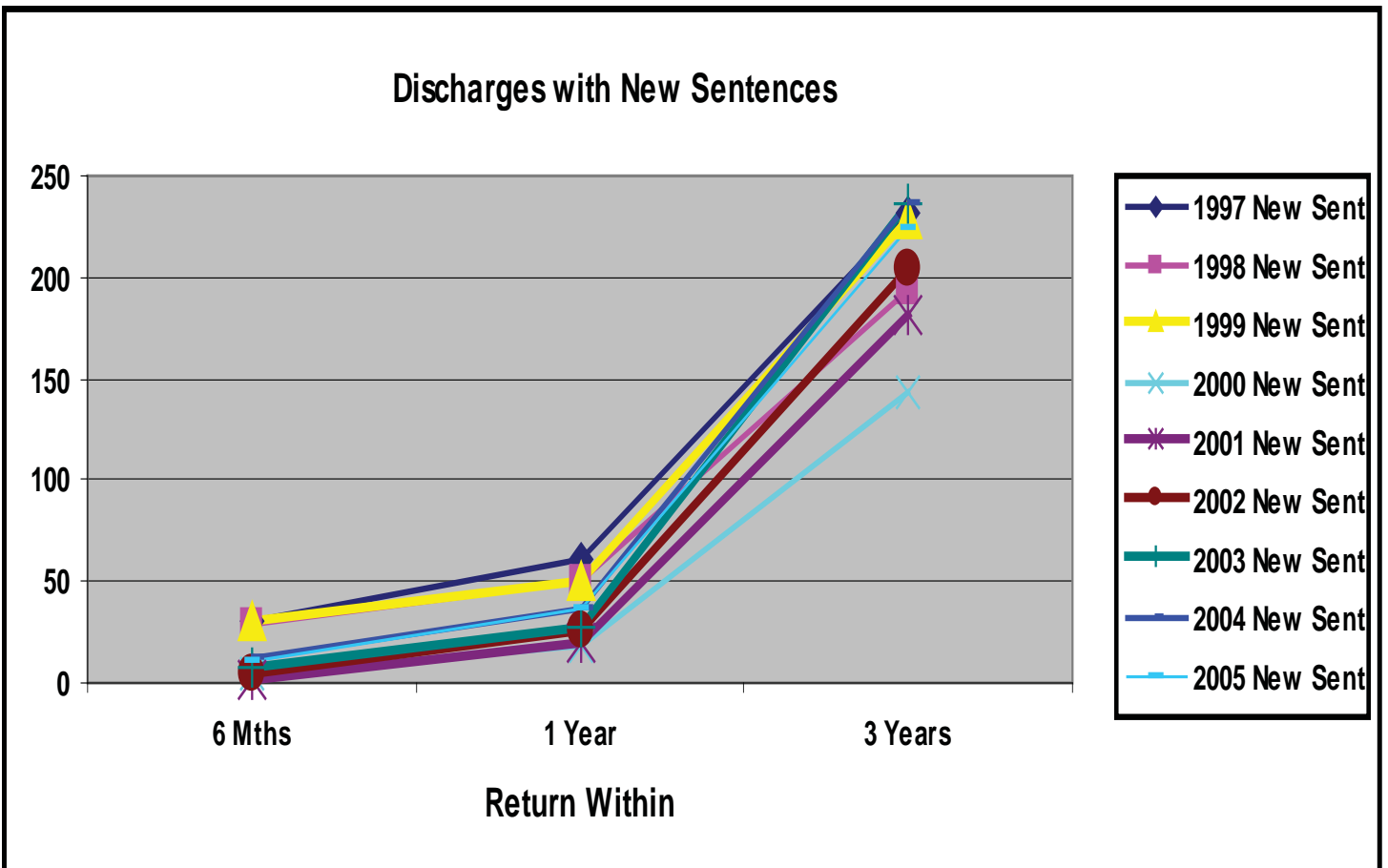


Figure 3-3



Recidivism Rates: Gender

Table 4 and Figures 4, 4-1, 4-2 exhibits recidivism rates by gender. In **2005**, males increased in return rates over the three-year post release time frame. From six months to one-year, data demonstrated a fairly constant return rate for both males and females; however, by the end of the third year there was a significant increase in males returning to prison. Within each consecutive year, the overall return rate for males increased from **1997 to 2001**, while **2001 to 2004** reflects a **6.4 %** decrease in overall recidivism rates.

Table 4

| Recidivism Rates By Gender | | | | | | | | | |
|-----------------------------------|---------------|-----------------------|-----------------------|------------------|-----------------------|------------------|------------------------|------------------------|------------------------------------|
| Year | Gender | Total Releases | 6 month Return | % Returns | 1 Year Returns | % Returns | 3 Years Returns | Total % Returns | Total Inmates Not Returning |
| 1997 | Female | 439 | 38 | 8.7% | 94 | 21.4% | 162 | 36.9% | 277 |
| | Male | 4,229 | 683 | 16.2% | 1,300 | 30.7% | 2,127 | 50.3% | 2,102 |
| 1998 | Female | 512 | 75 | 14.6% | 123 | 24.0% | 227 | 44.3% | 285 |
| | Male | 4,922 | 823 | 16.7% | 1,501 | 30.5% | 2,528 | 51.4% | 2,394 |
| 1999 | Female | 545 | 58 | 10.6% | 115 | 21.1% | 206 | 37.8% | 339 |
| | Male | 4,785 | 774 | 16.2% | 1,514 | 31.6% | 2,532 | 52.9% | 2,253 |
| 2000 | Female | 652 | 75 | 11.5% | 158 | 24.2% | 264 | 40.5% | 388 |
| | Male | 5,220 | 759 | 14.5% | 1,543 | 29.6% | 2,766 | 53.0% | 2,454 |
| 2001 | Female | 625 | 81 | 13.0% | 140 | 22.4% | 260 | 41.6% | 365 |
| | Male | 5,337 | 867 | 16.2% | 1,631 | 30.6% | 2,806 | 52.6% | 2,531 |
| 2002 | Female | 594 | 67 | 11.3% | 134 | 22.6% | 242 | 40.7% | 320 |
| | Male | 5,421 | 844 | 15.6% | 1,582 | 29.2% | 2,727 | 50.3% | 2,426 |
| 2003 | Female | 616 | 54 | 8.8% | 111 | 18.0% | 215 | 34.9% | 401 |
| | Male | 5,519 | 738 | 13.4% | 1,475 | 26.7% | 2,690 | 48.7% | 2,829 |
| 2004 | Female | 551 | 31 | 5.6% | 56 | 10.2% | 139 | 25.2% | 413 |
| | Male | 5,693 | 667 | 11.7% | 1,321 | 23.2% | 2,633 | 46.2% | 3,060 |
| 2005 | Female | 534 | 15 | 2.8% | 44 | 8.2% | 123 | 23.0% | 411 |
| | Male | 5,124 | 403 | 7.9% | 992 | 19.4% | 2,221 | 43.3% | 2,903 |

Figure 4

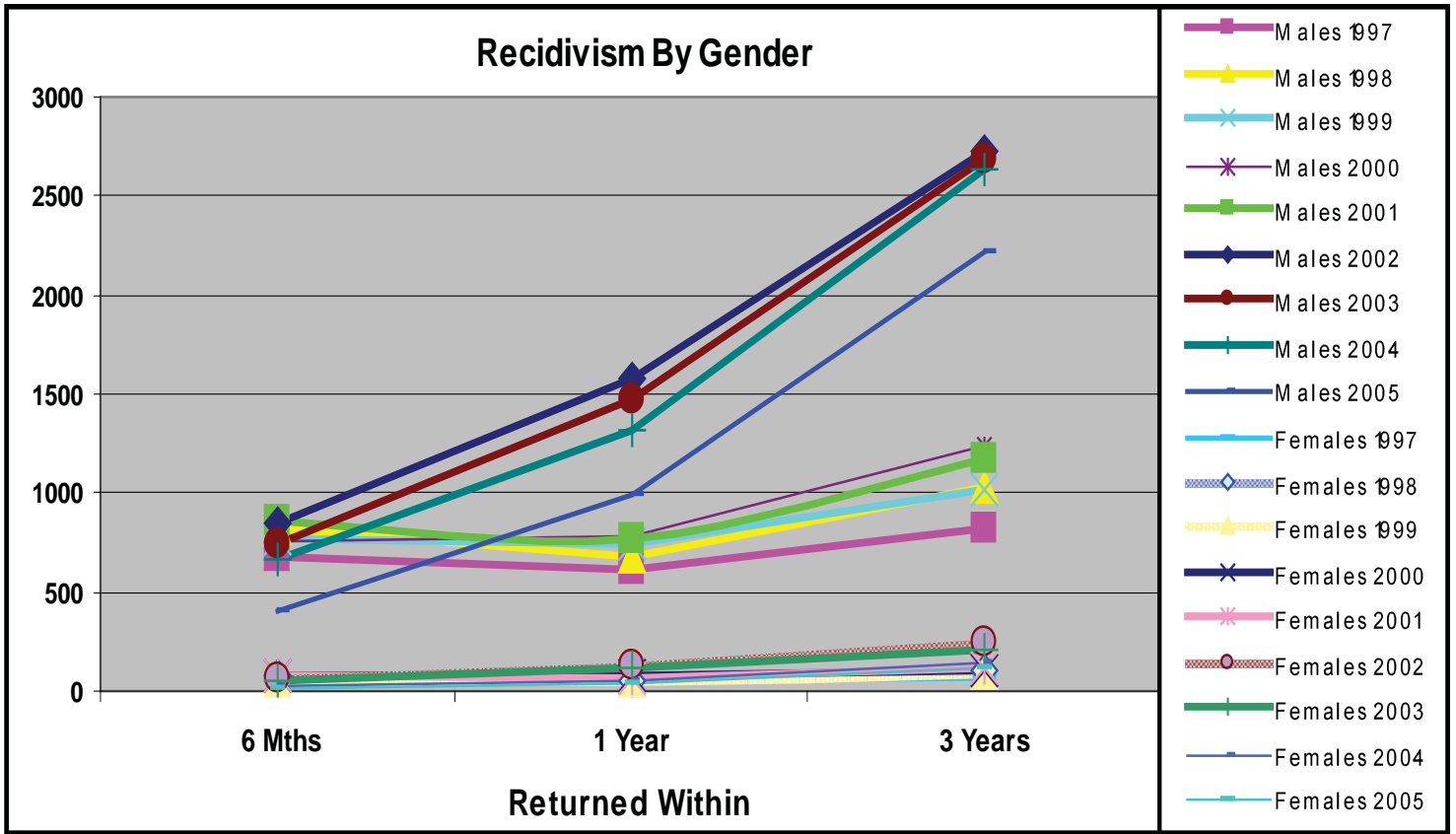


Figure 4-1

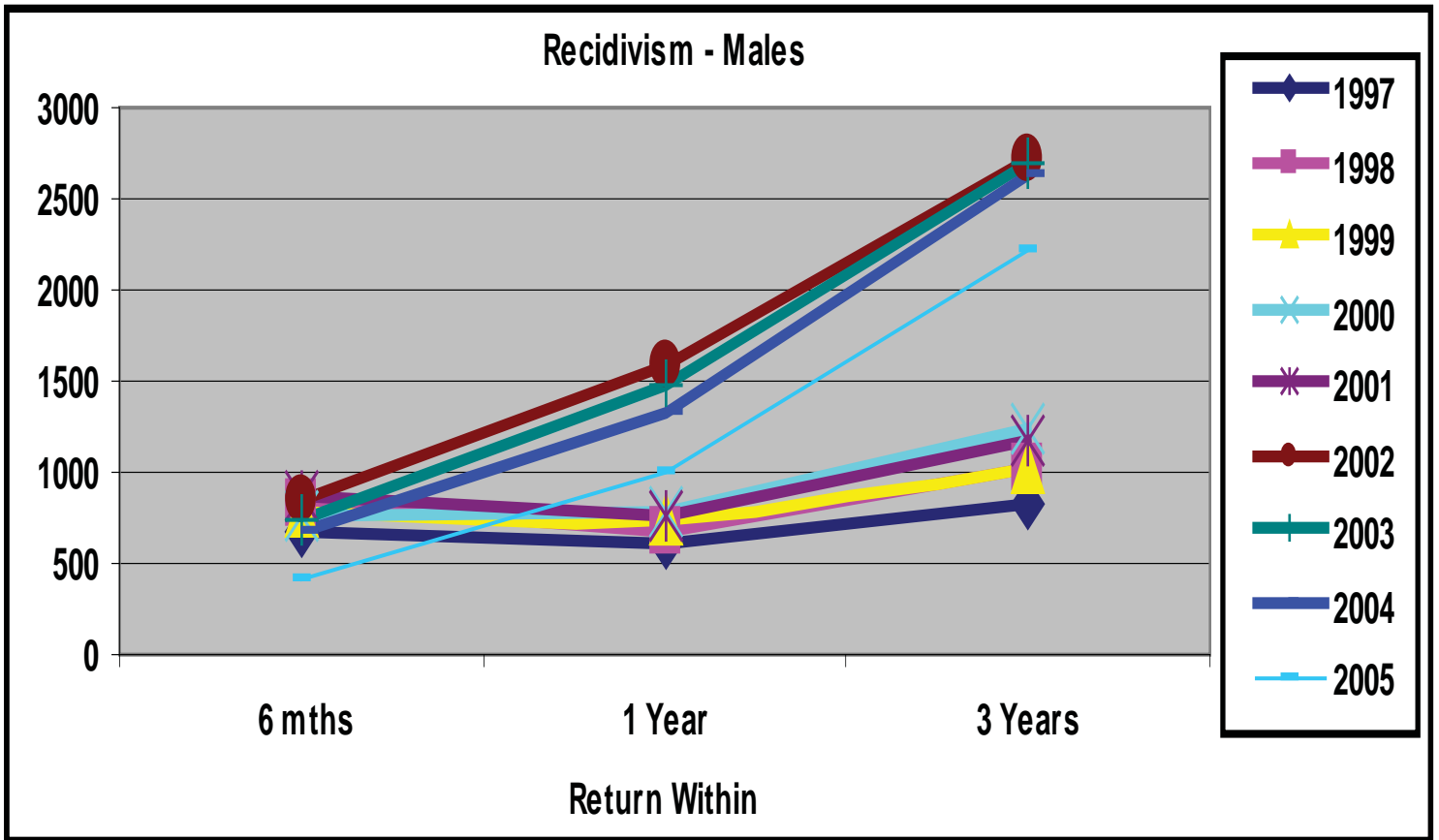
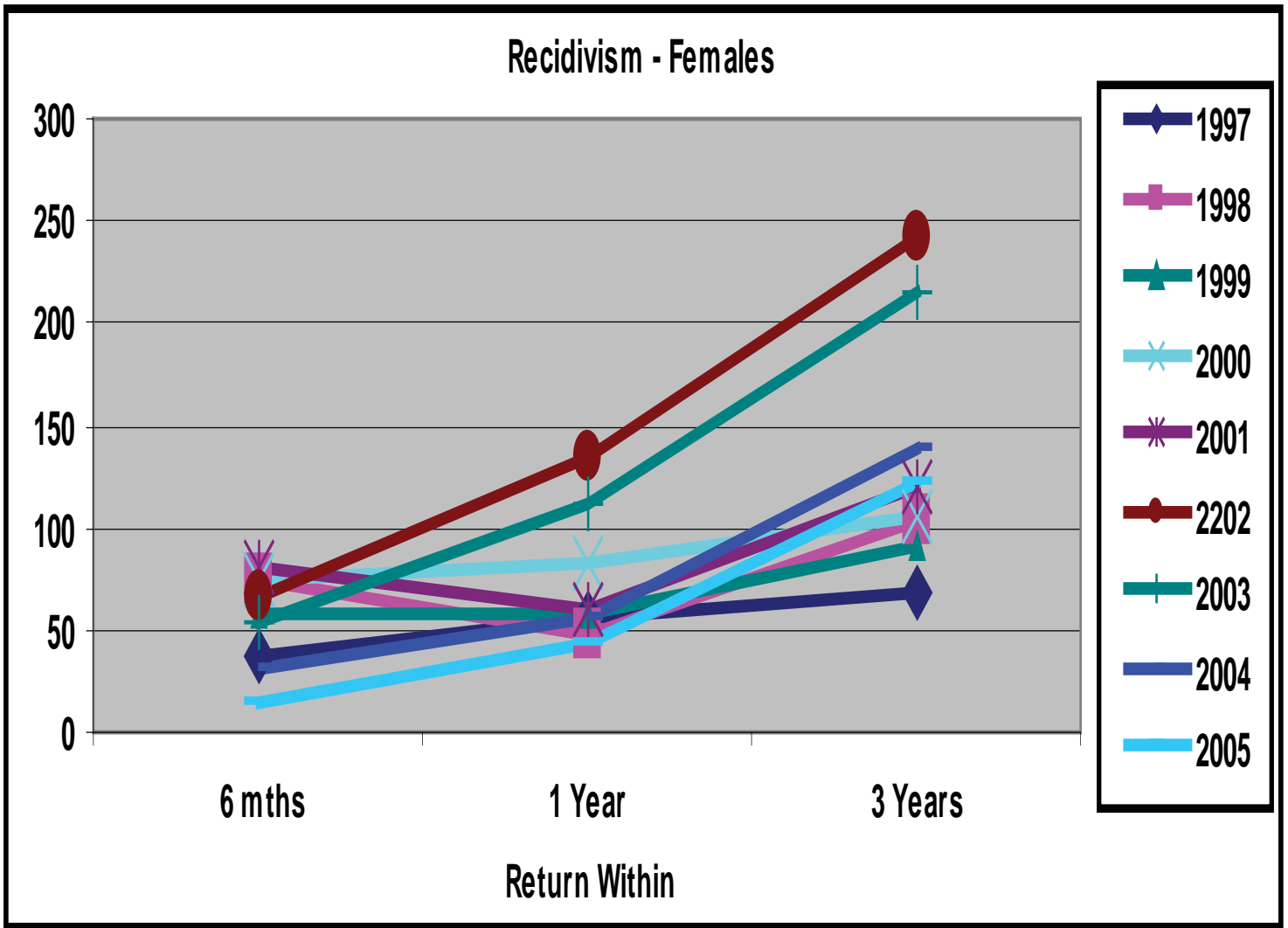


Figure 4-2



Recidivism Rates: Race

Recidivism rates were generated by race for **CY2005**, and incorporated time frames of six (6) months, one-year, and three-years. Recidivism rates were based on three areas of ethnic diversity. Within the ADC, the population primarily consists of Caucasian and African-American racial designation, while only a small percentage consists of Hispanic and other. For this report, the Hispanic category consists of Cuban and Mexican racial designations and the other category incorporates both Asian and Native American. The **2005** recidivism addendum study incorporates Caucasian, African-American, Hispanic, and other racial designations to demonstrate recidivism rates by race as provided in Table 5. In **2005**, **3,273** Caucasian inmates were released. Within six (6) months, **241** or **7.4%** returned to prison. Within one (1) year, **563** or **17.2%** returned and within three (3) years, **1,248** or **38.1%** returned to prison. For **CY2005**, African-American inmates have a higher recidivism rate (**46.6% vs. 38.1%**) than their Caucasian counterparts (see table 5).

Table 5

| 2004 Recidivism Rates By Race | | | | | | | | |
|-------------------------------|----------|----------------|-----------------|-----------|----------------|-----------|-----------------|-----------|
| Year | Race | Total Releases | 6 Month Returns | % Returns | 1 Year Returns | % Returns | 3 Years Returns | % Returns |
| | | | | | | | | |
| 1997 | Black | 2,420 | 413 | 17.1% | 795 | 32.9% | 1,268 | 52.4% |
| | Hispanic | 29 | 2 | 6.9% | 4 | 13.8% | 7 | 24.1% |
| | Other | 16 | 0 | 0.0% | 0 | 0.0% | 2 | 12.5% |
| | White | 2,202 | 306 | 13.9% | 595 | 27.0% | 1,013 | 46.0% |
| 1998 | Black | 2,685 | 481 | 17.9% | 877 | 32.7% | 1,463 | 54.5% |
| | Hispanic | 25 | 5 | 20.0% | 7 | 28.0% | 8 | 32.0% |
| | Other | 18 | 1 | 5.6% | 4 | 22.2% | 9 | 50.0% |
| | White | 2,706 | 411 | 15.2% | 737 | 27.2% | 1,275 | 47.1% |
| 1999 | Black | 2,541 | 414 | 16.3% | 801 | 31.5% | 1,362 | 53.6% |
| | Hispanic | 19 | 2 | 10.5% | 3 | 15.8% | 5 | 26.3% |
| | Other | 13 | 0 | 0.0% | 2 | 15.4% | 3 | 23.1% |
| | White | 2,757 | 416 | 15.1% | 822 | 29.8% | 1,367 | 49.6% |
| 2000 | Black | 2,756 | 401 | 14.6% | 817 | 29.6% | 1,512 | 54.9% |
| | Hispanic | 66 | 6 | 9.1% | 10 | 15.2% | 16 | 24.2% |
| | Other | 62 | 4 | 6.5% | 5 | 8.1% | 9 | 14.5% |
| | White | 2,988 | 423 | 14.2% | 869 | 29.1% | 1,503 | 50.3% |
| 2001 | Black | 2,718 | 463 | 17.0% | 839 | 30.9% | 1,476 | 54.3% |
| | Hispanic | 64 | 3 | 4.7% | 10 | 15.6% | 18 | 28.1% |
| | Other | 45 | 3 | 6.7% | 4 | 8.9% | 8 | 17.8% |
| | White | 3,135 | 479 | 15.3% | 918 | 29.3% | 1,564 | 49.9% |
| 2002 | Black | 2,618 | 408 | 15.6% | 741 | 28.3% | 1,335 | 51.0% |
| | Hispanic | 75 | 5 | 6.7% | 9 | 12.0% | 13 | 17.3% |
| | Other | 30 | 0 | 0.0% | 3 | 10.0% | 7 | 23.3% |
| | White | 3,292 | 497 | 15.1% | 962 | 29.2% | 1,613 | 49.0% |
| 2003 | Black | 2,768 | 321 | 11.6% | 691 | 25.0% | 1,349 | 48.7% |
| | Hispanic | 50 | 4 | 8.0% | 11 | 22.0% | 20 | 40.0% |
| | Other | 13 | 0 | 0.0% | 1 | 7.7% | 5 | 38.5% |
| | White | 3,304 | 467 | 14.1% | 883 | 26.7% | 1,531 | 46.3% |
| 2004 | Black | 2,711 | 255 | 9.4% | 573 | 21.1% | 1,260 | 46.5% |
| | Hispanic | 64 | 10 | 15.6% | 14 | 21.9% | 24 | 37.5% |
| | Other | 19 | 1 | 5.3% | 4 | 21.1% | 5 | 26.3% |
| | White | 3,450 | 432 | 12.5% | 786 | 22.8% | 1,483 | 43.0% |
| 2005 | Black | 2,285 | 167 | 7.3% | 455 | 19.9% | 1,064 | 46.6% |
| | Hispanic | 70 | 6 | 8.6% | 11 | 15.7% | 22 | 31.4% |
| | Other | 30 | 4 | 13.3% | 7 | 23.3% | 10 | 33.3% |
| | White | 3,273 | 241 | 7.4% | 563 | 17.2% | 1,248 | 38.1% |

Recidivism Rates: Age

Age shows to be significantly related to recidivism within the ADC. An inmate's age at his/her last admission was significantly related to return to custody (See table 6). For males, this was fairly evident when reviewing age cohorts of **25-34** as primary, and **35-44** as secondary return age ranges. Females returning to prison also demonstrated increase returns in age ranges of **25-34** and **35-44** (See Figure 6).

Table 6

| 2005 Recidivism by Age (female) | | | | | |
|--|---------|------------------|----------------|-----------------|-----------------|
| Gender | AGE | 6 Months Returns | 1 Year Returns | 3 Years Returns | Total % Returns |
| Female | 18 - 24 | 3 | 3 | 12 | 15.2% |
| | 25 - 34 | 8 | 16 | 30 | 38.0% |
| | 35 - 44 | 4 | 9 | 32 | 40.5% |
| | 45 - 54 | 0 | 1 | 5 | 6.3% |
| | Total | 15 | 29 | 79 | 100.0% |

Table 6-1

| 2005 Recidivism by Age (male) | | | | | |
|--------------------------------------|---------|------------------|----------------|-----------------|-----------------|
| Gender | AGE | 6 Months Returns | 1 Year Returns | 3 Years Returns | Total % Returns |
| Male | 18 - 24 | 98 | 133 | 260 | 21.2% |
| | 25 - 34 | 152 | 211 | 500 | 40.7% |
| | 35 - 44 | 120 | 182 | 327 | 26.6% |
| | 45 - 54 | 31 | 58 | 130 | 10.6% |
| | 55 - 64 | 2 | 4 | 11 | 0.9% |
| | >= 65 | 0 | 1 | 1 | 0.1% |
| | Total | 403 | 589 | 1,229 | 100.0% |

Figure 6

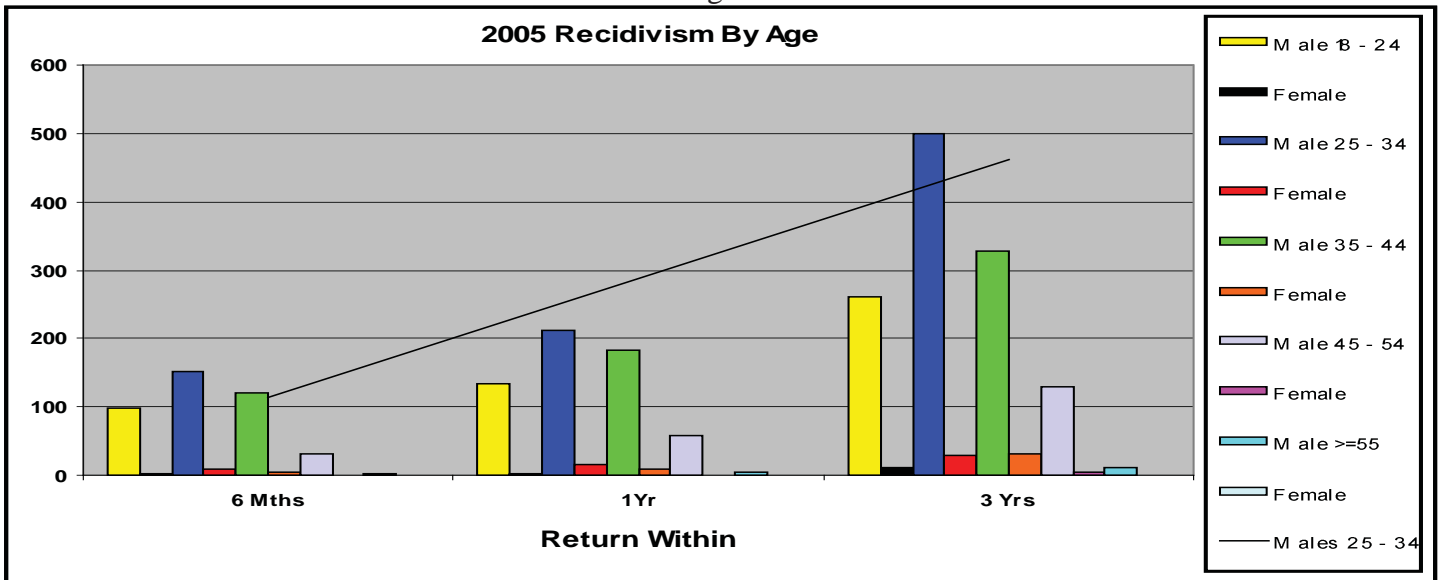


Table 7

| Recidivism Rates By Offense Category | | | |
|---|--------------------|-----------------------|-------------------|
| Offense Category | No.Releases | Ret w/in 3 yrs | % Returned |
| 0101 - Capital Murder | 1 | 1 | 100.0% |
| 0102 - Murder-1st Degree | 55 | 16 | 29.1% |
| 0103 - Murder-2nd Degree | 53 | 21 | 39.6% |
| 0104 - Manslaughter | 35 | 13 | 37.1% |
| 0105 - Negligent Homicide | 14 | 1 | 7.1% |
| 0201 - Kidnapping | 32 | 16 | 50.0% |
| 0202 - False Imprisonment-1st Degree | 31 | 21 | 67.7% |
| 0203 - Vehicular Piracy | 1 | 0 | 0.0% |
| 0301 - Robbery | 401 | 212 | 52.9% |
| 0302 - Aggravated Robbery | 137 | 51 | 37.2% |
| 0401 - Battery-1st Degree | 99 | 42 | 42.4% |
| 0402 - Battery-2nd Degree | 260 | 116 | 44.6% |
| 0403 - Aggravated Assault | 179 | 74 | 41.3% |
| 0404 - Terroristic Threatening | 112 | 51 | 45.5% |
| 0405 - Terroristic Act | 32 | 16 | 50.0% |
| 0407 - Battery 3rd Deg. (Enhanced) | 1 | 0 | 0.0% |
| 0501 - Rape | 44 | 12 | 27.3% |
| 0502 - Carnal Abuse-1st Degree | 10 | 4 | 40.0% |
| 0504 - Sexual Abuse-1st Degree | 80 | 36 | 45.0% |
| 0505 - Violation Of A Minor-1st Dg | 5 | 1 | 20.0% |
| 0506 - Violation Of A Minor-2nd Dg | 2 | 1 | 50.0% |
| 0507 - Exposing One To HIV | 1 | 1 | 100.0% |
| 0510 - Carnal Abuse-3rd Degree | 11 | 1 | 9.1% |
| 0511 - Sexual Solicitation Of A Child | 1 | 1 | 100.0% |
| 0513 - Sexual Assault | 44 | 14 | 31.8% |
| 0701 - Incest | 7 | 2 | 28.6% |
| 0702 - Domestic Battering-1st Degree | 9 | 4 | 44.4% |
| 0703 - Domestic Battering-2nd Degree | 33 | 13 | 39.4% |
| 0704 - Agg. Aslt On Family/Household | 16 | 6 | 37.5% |
| 0705 - Non-Support | 32 | 11 | 34.4% |
| 0708 - Domestic Battering-3rd Degree | 62 | 28 | 45.2% |
| 0801 - Endanger Welfare Minor-1st Dg | 4 | 2 | 50.0% |
| 0803 - Permit Child Abuse | 1 | 1 | 100.0% |
| 0804 - Engage Child In Sex Explct | 3 | 0 | 0.0% |
| 0809 - Solicit Money/Prop From Incomp | 1 | 0 | 0.0% |
| 0810 - Sexual Solicitation Of A Child | 15 | 8 | 53.3% |
| 0813 - Dist/Poss/View Sex Explicit | 2 | 0 | 0.0% |
| 0814 - Computer Child Pornography | 2 | 0 | 0.0% |
| 0828 - Expose Child to Chem Substance | 2 | 0 | 0.0% |
| 0830 - Sexual Indecency With A Child | 3 | 3 | 100.0% |
| 0901 - Abuse Of Adults | 1 | 0 | 0.0% |

Table 7 -contd.

| Recidivism Rates By Offense Category | | | |
|---|--------------------|-----------------------|-------------------|
| Offense Category | No.Releases | Ret w/in 3 yrs | % Returned |
| 1001 - Theft Of Property | 1145 | 575 | 50.2% |
| 1002 - Theft Of Services | 5 | 1 | 20.0% |
| 1004 - Theft By Receiving | 268 | 132 | 49.3% |
| 1005 - Theft Of Leased Property | 6 | 1 | 16.7% |
| 1006 - Theft Of Public Benefits | 9 | 3 | 33.3% |
| 1101 - Forgery | 239 | 102 | 42.7% |
| 1102 - Defrauding Secured Creditors | 1 | 1 | 100.0% |
| 1104 - Fraudulent Use Of Credit Card | 18 | 7 | 38.9% |
| 1107 - Possession Of Forgery Device | 1 | 1 | 100.0% |
| 1112 - Fraud Acq/Aut. Prov. MV Trans | 1 | 1 | 100.0% |
| 1113 - Hot Check Violation | 84 | 28 | 33.3% |
| 1118 - Financial Identity Fraud | 1 | 0 | 0.0% |
| 1119 - Criminal Impersonation | 1 | 0 | 0.0% |
| 1126 - Unlawful Copy/ Sale of Record | 1 | 0 | 0.0% |
| 1203 - Arson | 26 | 13 | 50.0% |
| 1205 - Criminal Mischief-1st Degree | 25 | 9 | 36.0% |
| 1207 - Criminal Mischief 2nd Degree | 4 | 0 | 0.0% |
| 1301 - Burglary | 14 | 5 | 35.7% |
| 1302 - Breaking And Entering | 78 | 37 | 47.4% |
| 1303 - Residential Burglary | 94 | 51 | 54.3% |
| 1304 - Commercial Burglary | 49 | 20 | 40.8% |
| 1501 - Public Servant Bribery | 2 | 0 | 0.0% |
| 1601 - Perjury | 2 | 0 | 0.0% |
| 1603 - Intimidating A Witness | 3 | 2 | 66.7% |
| 1604 - Tampering With Physical Evid. | 3 | 2 | 66.7% |
| 1611 - Release/Disc To Unauth Person | 1 | 0 | 0.0% |
| 1702 - Hindering Apprehension Or Proc | 7 | 1 | 14.3% |
| 1703 - Aiding Consumption Of Offense | 1 | 1 | 100.0% |
| 1705 - Escape-1st Degree | 1 | 1 | 100.0% |
| 1706 - Escape-2nd Degree | 12 | 6 | 50.0% |
| 1711 - Furnishing Prohib. Articles | 12 | 8 | 66.7% |
| 1712 - Failure To Appear | 62 | 27 | 43.5% |
| 1713 - Fleeing | 22 | 6 | 27.3% |
| 1715 - Filing A False Report | 2 | 0 | 0.0% |
| 1718 - Absconding | 2 | 2 | 100.0% |
| 1720 - Fail To Register Child/Sex Off | 15 | 4 | 26.7% |
| 2201 - Fail. To Keep Records Dist Drg | 65 | 14 | 21.5% |
| 2202 - Advertise Drug Paraphernalia | 539 | 149 | 27.6% |
| 2203 - Manu/Delv/Poss Control Subs. | 757 | 270 | 35.7% |

Table 7 -contd.

| Recidivism Rates By Offense Category | | | |
|---|--------------------|-----------------------|-------------------|
| Offense Category | No.Releases | Ret w/in 3 yrs | % Returned |
| 2214 - Poss W/I To Manufacture | 2 | 0 | 0.0% |
| 2215 - Possession Of Ephedrine | 6 | 2 | 33.3% |
| 2218 - Poss Anhyd Ammonia Unlaw/cont | 1 | 0 | 0.0% |
| 2301 - Viol Of Omb DWI Act 4th Offens | 60 | 18 | 30.0% |
| 2404 - Keeping A Gambling House | 1 | 0 | 0.0% |
| 2503 - Promoting Obscene Materials | 1 | 0 | 0.0% |
| 2701 - Aggravted Riot | 1 | 1 | 100.0% |
| 2707 - Stalking | 2 | 0 | 0.0% |
| 2901 - Poss. Firearm Certain Person | 36 | 10 | 27.8% |
| 2902 - Criminal Use Prohibited Weapon | 1 | 0 | 0.0% |
| 2904 - Criminal Poss. Of Explosives | 1 | 1 | 100.0% |
| 2908 - Furnish Deadly Weapon To Minor | 1 | 1 | 100.0% |
| 2912 - Possession Of Defaced Firearm | 1 | 0 | 0.0% |
| 3001 - Criminal Attempt | 70 | 17 | 24.3% |
| 3002 - Criminal Solicitation | 2 | 0 | 0.0% |
| 3003 - Criminal Conspiracy | 46 | 11 | 23.9% |
| 6503 - Fail To Stop Acc. W/Inj/Death | 5 | 0 | 0.0% |
| 8001 - Discharge Firearm From Vehicle | 4 | 2 | 50.0% |
| 8002 - Engage In Viol Crim Group Act | 1 | 1 | 100.0% |
| 8003 - Engage In Cont Gang Org/Ent 2d | 1 | 0 | 0.0% |
| 8004 - Simul. Poss Of Drugs/Firearm | 2 | 0 | 0.0% |
| Total | 5,657 | 2,344 | |

Recidivism Rates: Offense

Table Seven (7) reflects the return rates as a result of the type of offense, for a select period of time. A variety of offenses were analyzed in order to understand the breadth and depth of recidivism rates by offense and the return to prison within a three-year time frame. For clarity, Table 7 denotes the offense category, the actual number of releases/returns for **2005**, and the actual numbers and percent of returns within three (3) years for each category.