

ADC Facilities*

Facility	Type	Custody		Personnel	
		Capacity	Avg. Pop.	Security	Non Security
Benton	Min	325	325	57	20
Cummins	Med/Max	1,576	1,832	374	53
Delta Regional	Min/Med	614	616	159	24
East Arkansas	Med/Max	1,659	1,662	311	54
Ester	Med	579	575	138	17
Grimes	Med/Max	1,012	1,073	214	30
Maximum Security	Max	532	617	202	27
McPherson	Med/Max	964	976	195	35
Mississippi Co.	Min	133	135	31	7
North Central	Min/Med	800	826	174	23
Northwest	Min	100	99	26	4
Ouachita	Min/Med	1,837	1,821	409	57
Pine Bluff	Min/Med	494	487	148	21
Pine Bluff Re-Entry	Min	54	54	15	1
R. L. Williams	Min/Med	562	556	127	24
Texarkana	Min	128	125	27	4
Tucker	Med/Max	1,002	999	168	31
Varner/VSM	Med/Max	1,686	1,723	302	56
Wrightsville/Hawkins	Min/Med	1,306	1,306	247	36

*This table does not include non-agency beds (e.g., ALETA, ASP, Bowie Co., Act 309).

Industry Programs

Bus Barn Athletic/Recreation Equipment Custom Powder Coating Inmate Boots Mattresses Metal Fabrication Seating/Dorm Furniture Upholstery/Re-Upholstery Vehicle Refurbishing Coffee/Tea Eco-Products Toilet Paper Furniture	Garment Embroidery Graphic Arts Engraving Picture Frames Printing/Duplicating Janitorial Prison Industry Enhancement (PIE) Wire-harnesses Vinyl Products Signs Silk-Screening
--	--

Avg. Assigned ~ 496

Riverside Vocational-Technical Programs

Bldg. & Trade Technology
 Combination Welding
 Computer Applications
 Computer Accounting
 Cosmetology
 Culinary Arts
 Facilities Maintenance
 Finish Carpentry/Cabinets
 Food Service Technology
 Furniture*
 Graphic Arts*
 Horticulture
 HVAC & Refrigeration
 Landscape Const./Design

NCCER Industry Craft Skills**
 Office Technology
 Plumbing
 Residential Carpentry
 Residential Electricity
 ServSafe Food Handler
 Certificate**
 ServSafe Mgr. Certificate**
 Small Engine Mechanic
 Upholstery
 Welding (Assembly)*

*Industry Co-op
**Short Courses

Inmates Enrolled at Vo-Tech ~ 646
Inmates Completed Vo-Tech ~ 185

Educational Scores & Data

Test of Adult Basic Education:	Reading	Math
Pre-test Avg.	4.1	4.1
Post-test Avg.	4.2	4.1

Avg. Instr. Months: 6.5
Total Tested: 5,946

2017~2018 GED Recipients: 613

College Enrollment: 329
 Arkansas State University Newport (ASUN) ~ 45
 Central Arkansas Baptist Institute (CABBI) ~ 85
 Likewise College ~ 72
 Shorter College ~ 127



ADC

ARKANSAS DEPARTMENT OF CORRECTION

Fiscal Year 2018

Statistical Information & Trends

Wendy Kelley ~ Director

Solomon Graves ~ PIO/Legislative Liaison

Published by:

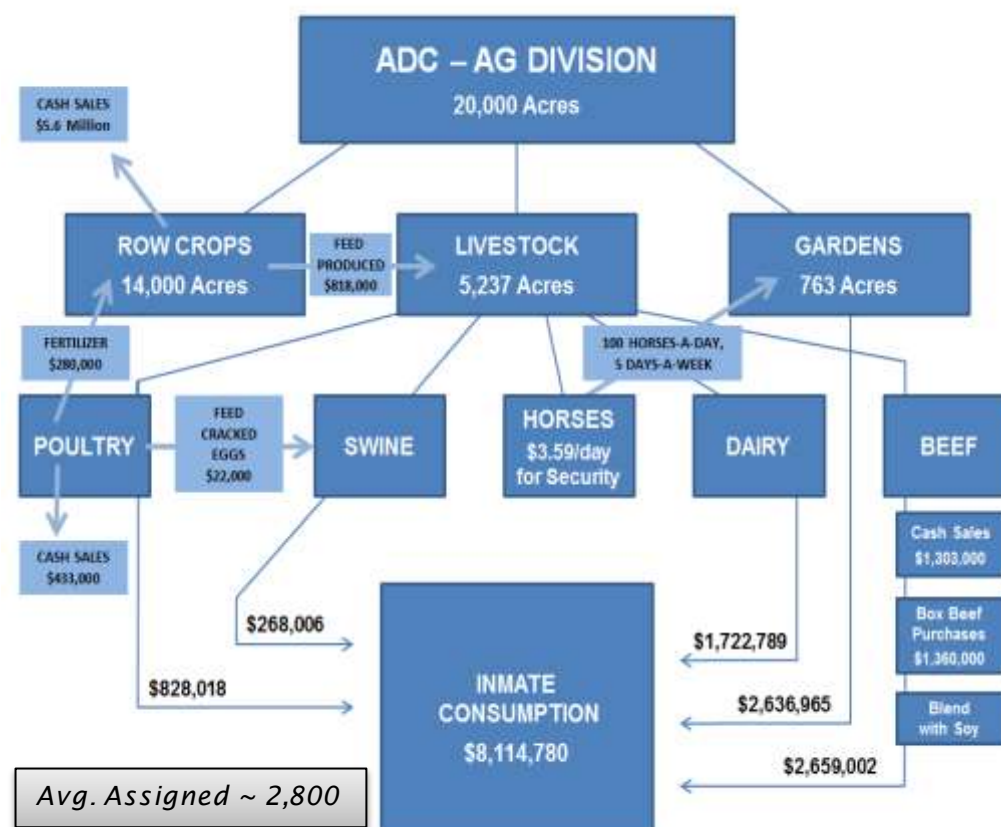
The Research & Planning Division

Tiffanye Compton ~ Administrator

Darrell McHenry ~ Project Analyst

Earnest Medlin ~ Software Support Analyst

Bryan Rodgers ~ Research & Statistics Supervisor



Avg. Assigned ~ 2,800

The Mission of the Arkansas Department of Correction is to provide public safety by carrying out the mandates of the courts; provide a safe humane environment for staff and inmates; strengthen the work ethic through teaching of good habits; and provide opportunities for staff and inmates to improve spiritually, mentally and physically.

The Vision of the Arkansas Department of Correction is to be an honorable and professional organization through ethical and innovative leadership at all levels, providing cost efficient, superior correctional services that return productive people to the community.

For more information go to www.adc.arkansas.gov

Revenues

General Revenue:	\$349,646,130
Agriculture:	\$ 6,944,283
Industry:	\$ 7,219,304
Work Release:	\$ 3,653,871

Average Inmate Cost
Annual ~ \$22,356
Daily ~ \$61.25

Fees

Work Release: \$17.00 per day-per inmate

Human Resource Information

Positions:	
Security:	3,473
Non-Security:	1,105
Ratio: Budgeted CO's to Inmate:	1:6.5
Beginning Salary for CO-I:	\$29,045.95 - \$33,693.30
Percentage Turnover Rate:	
Security:	8.9%
Non-Security:	9.0%
Percentage of Overall Employed Staff:	
Males:	53%
Females:	47%

Average County Jail Backup

MO.	YEAR									
	'09	'10	'11	'12	'13	'14	'15	'16	'17	'18
JUL	1,064	1,423	1,397	943	350	525	2,284 ⁸	2,598 ¹⁵	1,328	1,450 ²²
AUG	1,265	1,646	1,604	911	445	991	2,214 ⁹	2,572	1,469	1,510
SEP	1,266	1,694	1,652	699	408	1,512	2,200	2,109 ¹⁶	1,234	1,495
OCT	1,161	1,634	1,746	574 ⁴	309	1,993	2,252 ¹⁰	1,881 ¹⁷	1,435 ¹⁹	1,667
NOV	1,285	1,619	1,942	622 ⁵	415	2,517	2,428 ¹¹	1,798	1,331 ²⁰	1,735
DEC	1,301	1,543	1,819	568	243	2,642	2,323	1,324	994	1,540
JAN	1,170	1,483	1,662	631	254	2,650	2,261 ¹²	1,087 ¹⁸	1,039	1,480
FEB	1,375	1,587	1,731	730	446	2,782 ⁶	2,572	1,178	1,278	1,579
MAR	1,391	1,433	1,563	477	407	2,767	2,440 ¹³	943	1,122 ²¹	1,639 ²³
APR	1,403	1,450 ²	1,496 ³	452	358	2,487 ⁷	2,357 ¹⁴	989	1,212	1,762
MAY	1,513 ¹	1,609	1,493	580	573	2,584	2,734	1,220	1,321	1,818
JUN	1,332	1,481	1,246	468	487	2,515	2,688	1,123	1,308	1,579
AVG	1,294	1,550	1,613	638	391	2,164	2,396	1,569	1,256	1,604

Denotes lowest Denotes highest

100 beds @ORCU ¹	164 beds @McPherson	12 beds @MCWR ¹⁶
220 beds @ORCU ²	76 beds @Ouachita	56 beds @Hawkins
16 beds @Tucker ³	175 beds @WR Satellite	33 beds @McPherson
17 beds @Aleta/ASP ⁴	2 beds @Aleta/ASP ⁹	11 beds @Delta ¹⁷
20 beds @RLW ⁵	124 beds @Bootcamp ¹⁰	196 beds @Ester ¹⁸
422 beds @ORCU	16 beds @Ouachita	32 beds @ORCU ¹⁹
98 beds @Tucker ⁶	18 beds @VSM/Varner ¹¹	16 beds @ORCU ²⁰
200 beds @NCU ⁷	38 beds @Tucker ¹²	7 beds @ORCU ²¹
29 beds @Delta	60 beds @Varner	199 beds @Ester
5 beds @Aleta/ASP	288 beds @Bowie Co. ¹³	64 beds @Pine Bluff ²²
50 beds @NCU ⁸	12 beds @Grimes ¹⁴	*300 beds @Cummins ²³
10 beds @Delta	54 beds @PBWR	*124 beds @Tuck. Re-Entry
58 beds @NWARWR	184 beds @Ester ¹⁵	
	48 beds @Bowie Co.	

BED ADJUSTMENTS BY YEAR

Inmate Population

Gender:	Male 92.0%	Female 8.0%
Race:	White 54.0%	Hispanic 3.0%
	Black 42.0%	Other 1.0%

Average Age of Population: Male = 39 Female = 37
Average Age at Admission: Male = 35 Female = 35

Classification of Inmates

Class I-A	5.2%	Class I-P	0.1%
Class I-B	4.7%	Class II	13.8%
Class I-C	52.5%	Class III	4.0%
Class I-D	0.3%	Class IV	19.4%

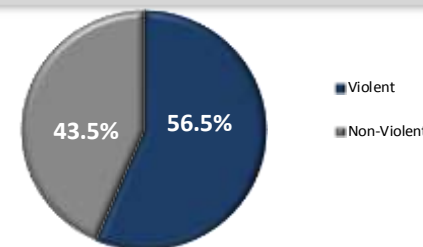
Custody Level

Minimum: 49.2% Medium: 33.2%
Maximum: 17.5% Unclassified: 0.1%

Inmate Sentencing Data

Total Inmates Admitted:	8,503
Total Inmates Released:	8,154
Total Inmates Sentenced to Life:	1,372
Total Inmates Serving Death:	29
Avg. Juvenile Population:	15
Avg. Length of Sentence for Population:	19y 9m 0d
Avg. Length of Sentence for Admission:	8y 4m 20d
Avg. Length of Time Served:	4y 9m 19d

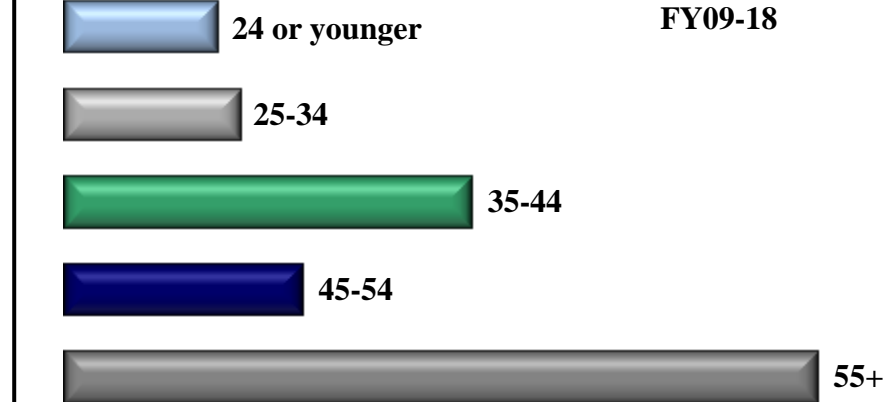
Offense Type (%)*



*As defined by A.C.A. 5-4-501(d)(2)

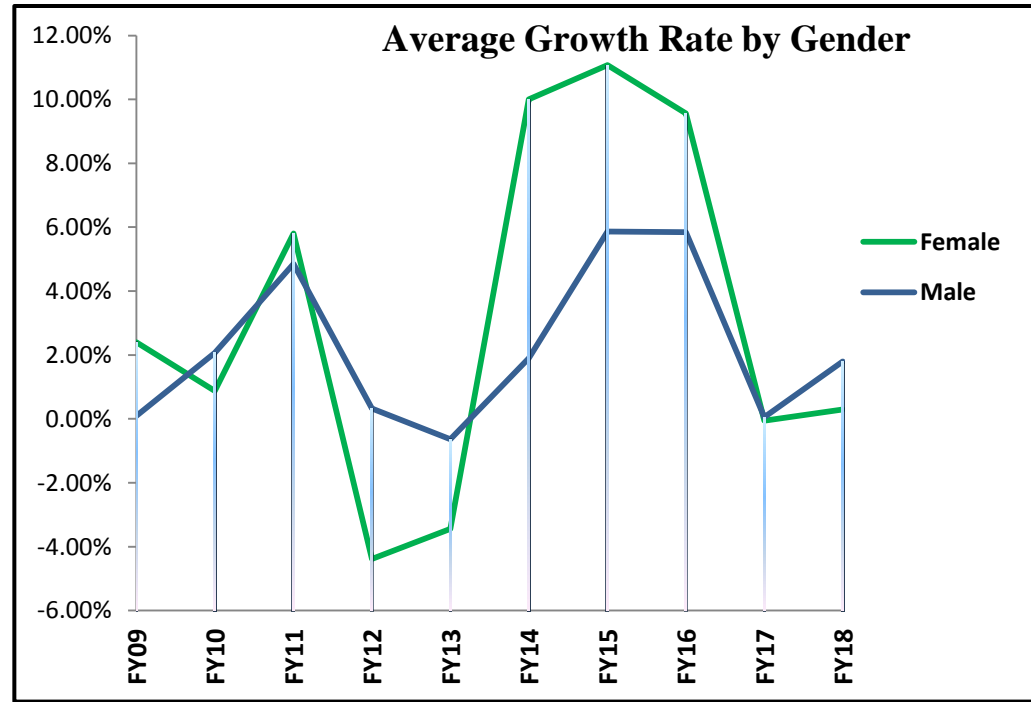
Comparative Look

Growth in Admission by Age Group FY09-18



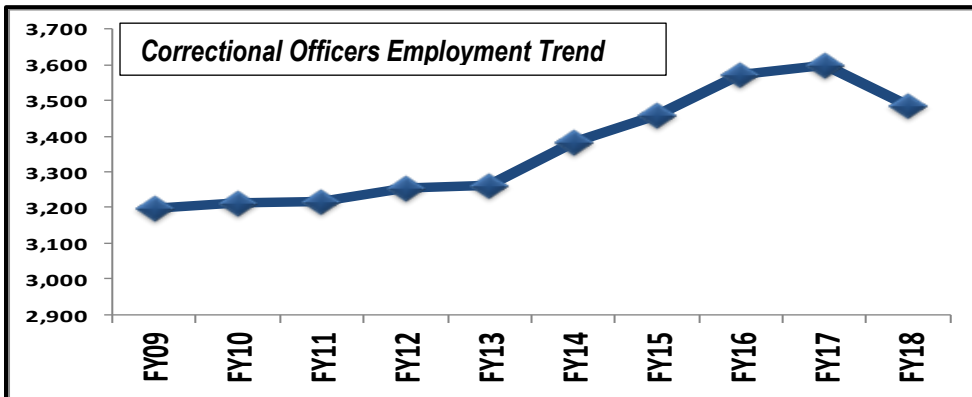
Statistically, the risk of recidivism decreases significantly with age, yet the number of elderly prisoners (age 55+) continues to be the fastest growing age group. They represent 12% of the ADC Population and have a growth rate of 98% over the last 10 years.

Average Growth Rate by Gender



Over the last decade, the ADC females have an average growth rate of 3.3% compared to the males' growth rate of 2.2%.

Correctional Officers Employment Trend



Average County Jail Backup Historical Trend

